

**Texas AgriLife Research**

Phone 325 653 4576

Email. f-pfeiffer@tamu.edu

7887 US Hwy 87N

San Angelo, TX 76901

**OFDA 2000 REPORT : SORTED BY TAG**

38 Wool Samples (38Records)

**Job Details**

Jeanne T. Dukerschein

Texas AgriLife Research Informational Test Only

Reference: 0293 - 0283

Tested: Mar 26, 2018

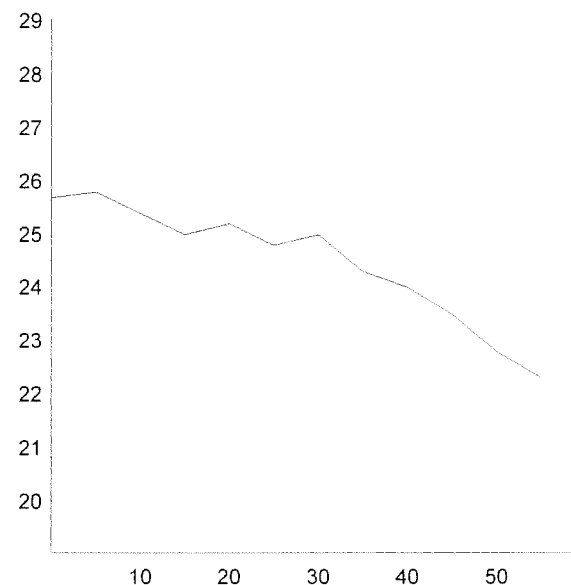
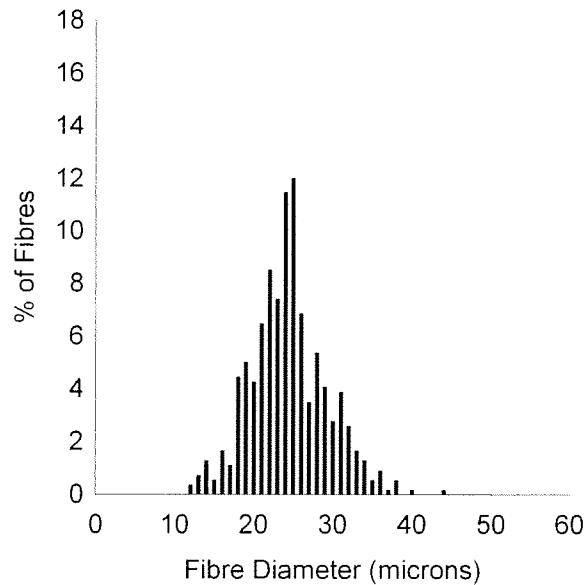
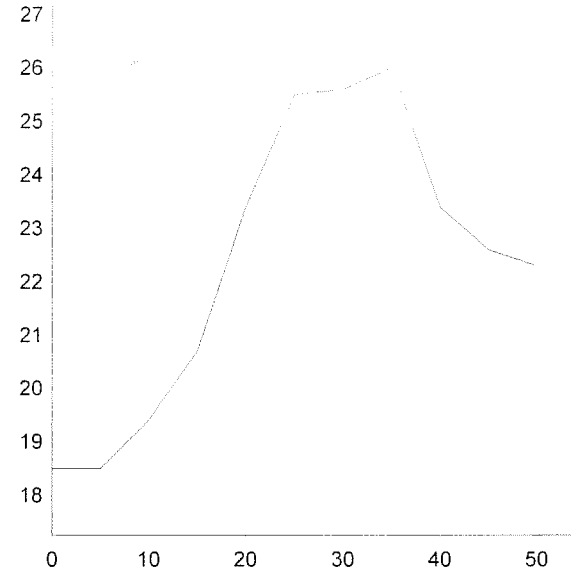
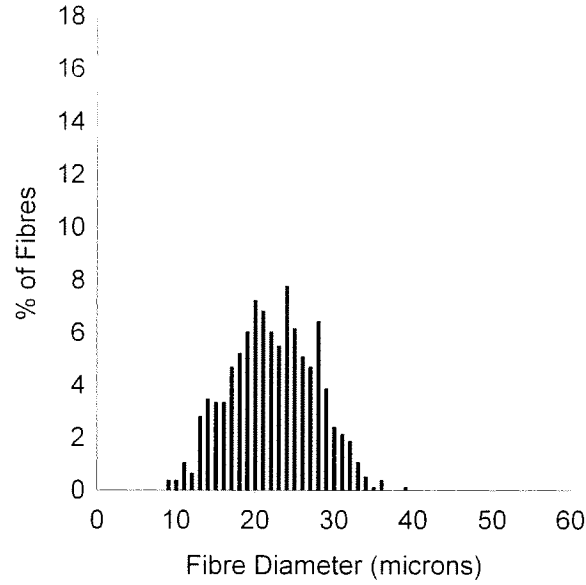
| Animal Eartag   | Mic Ave | SD Mic | CV Mic | CEM  | <15 % | CF % | SF Mic | SL mm | Min Mic | Max Mic | SD Along | CRV Dg/mm | SDC Dg/mm |
|-----------------|---------|--------|--------|------|-------|------|--------|-------|---------|---------|----------|-----------|-----------|
| Averages        | 27.1    | 5.6    | 20.8   | 10.2 | 1.3   | 73.5 | 26.4   | 80.1  | 24.1    | 29.6    | 1.73     | 72.8      | 54.7      |
| A- Lacelot      | 22.3    | 5.4    | 24.3   | 9.4  | 8.9   | 93.7 | 22.3   | 55.0  | 18.5    | 26.0    | 2.80     | 103.9     | 75.8      |
| B- Leego        | 24.4    | 4.9    | 19.9   | 8.9  | 2.4   | 88.0 | 23.5   | 60.0  | 22.3    | 25.8    | 1.10     | 89.7      | 59.1      |
| C-Mancera       | 22.7    | 4.9    | 21.8   | 8.9  | 3.0   | 93.1 | 22.2   | 70.0  | 21.2    | 24.1    | 1.00     | 97.5      | 74.6      |
| CC-April        | 29.3    | 5.4    | 18.3   | 9.4  | 0.2   | 61.8 | 27.9   | 85.0  | 24.8    | 31.1    | 2.00     | 74.3      | 55.7      |
| CC-Kinnell      | 28.3    | 7.8    | 27.6   | 16.5 | 0     | 68.5 | 29.3   | 65.0  | 26.8    | 32.0    | 1.30     | 50.4      | 37.7      |
| CC-Victoria     | 26.9    | 6.4    | 23.6   | 12.6 | 0.4   | 74.9 | 26.8   | 60.0  | 24.2    | 29.1    | 1.60     | 69.9      | 52.6      |
| D-Merlin W      | 24.9    | 6.0    | 24.2   | 11.3 | 3.4   | 82.0 | 24.9   | 80.0  | 22.6    | 26.6    | 1.10     | 83.5      | 59.5      |
| E-Percival W    | 24.1    | 4.8    | 20.0   | 8.7  | 1.7   | 90.7 | 23.3   | 80.0  | 20.7    | 26.4    | 1.80     | 86.1      | 58.2      |
| F-Ector W       | 27.2    | 6.9    | 25.5   | 12.7 | 1.2   | 69.8 | 27.6   | 110.0 | 24.2    | 29.1    | 1.40     | 63.7      | 49.7      |
| G-Lionel W      | 24.0    | 5.5    | 22.8   | 8.7  | 5.0   | 88.4 | 23.8   | 75.0  | 20.7    | 27.2    | 2.30     | 74.1      | 56.1      |
| H-Alainor       | 28.9    | 6.4    | 22.3   | 11.1 | 0.8   | 60.6 | 28.4   | 130.0 | 26.2    | 32.9    | 2.00     | 44.4      | 39.4      |
| HH-Alainor      | 22.7    | 4.2    | 18.6   | 7.6  | 2.8   | 96.6 | 21.6   | 80.0  | 21.5    | 23.8    | 0.60     | 70.7      | 52.7      |
| I-Winifred      | 26.3    | 4.7    | 18.0   | 7.9  | 0.4   | 84.3 | 25.0   | 55.0  | 23.8    | 28.7    | 1.50     | 85.4      | 65.0      |
| J-Juliana       | 24.6    | 4.2    | 17.0   | 7.1  | 0.9   | 92.9 | 23.2   | 70.0  | 22.3    | 27.4    | 1.80     | 93.6      | 65.8      |
| K-Arabesque     | 29.6    | 6.1    | 20.6   | 11.3 | 0.1   | 58.6 | 28.7   | 80.0  | 26.6    | 32.9    | 2.00     | 66.0      | 52.5      |
| L-Thea          | 26.1    | 4.8    | 18.4   | 7.7  | 1.5   | 82.4 | 24.9   | 90.0  | 23.0    | 28.9    | 1.70     | 68.6      | 49.1      |
| M-Spicecake     | 28.5    | 5.8    | 20.4   | 10.7 | 0.7   | 67.9 | 27.6   | 70.0  | 25.9    | 30.8    | 1.70     | 70.1      | 55.1      |
| N-Noss          | 30.4    | 5.4    | 17.8   | 9.1  | 0.2   | 50.6 | 28.9   | 100.0 | 29.2    | 32.0    | 0.80     | 49.5      | 37.6      |
| NN-Noss         | 28.7    | 5.7    | 19.8   | 10.0 | 0.5   | 64.4 | 27.7   | 110.0 | 23.6    | 31.6    | 2.20     | 55.4      | 43.8      |
| O-Leda          | 29.2    | 5.9    | 20.1   | 9.8  | 0.8   | 58.9 | 28.2   | 65.0  | 27.2    | 31.6    | 1.50     | 73.7      | 59.7      |
| OO-Leda         | 27.0    | 4.1    | 15.1   | 7.1  | 0.1   | 81.9 | 25.1   | 95.0  | 24.1    | 28.9    | 1.20     | 78.0      | 61.1      |
| P-Mirabelle 087 | 27.1    | 4.5    | 16.6   | 7.8  | 0.2   | 80.0 | 25.4   | 70.0  | 23.6    | 29.3    | 1.90     | 93.0      | 65.9      |
| Q-Gussalyn 088  | 26.2    | 5.1    | 19.3   | 8.5  | 1.3   | 80.5 | 25.2   | 85.0  | 24.0    | 27.5    | 1.10     | 75.6      | 54.3      |
| R-Malkyn 092    | 23.2    | 5.2    | 22.3   | 9.3  | 3.2   | 92.0 | 22.9   | 85.0  | 20.1    | 25.9    | 1.90     | 88.8      | 66.7      |
| S-Ceres         | 28.5    | 6.8    | 24.0   | 13.5 | 0.9   | 67.3 | 28.4   | 100.0 | 24.8    | 33.4    | 2.60     | 63.2      | 46.6      |
| T-Garnet        | 26.6    | 6.1    | 23.0   | 10.3 | 2.7   | 73.5 | 26.4   | 70.0  | 22.4    | 29.1    | 2.00     | 79.4      | 58.7      |
| U-Ganymede      | 28.7    | 6.3    | 22.0   | 11.3 | 0.9   | 65.2 | 28.1   | 85.0  | 25.0    | 31.4    | 2.10     | 61.9      | 48.6      |
| UU-Ganymede     | 26.2    | 4.7    | 18.1   | 8.8  | 0.3   | 81.6 | 24.9   | 75.0  | 23.6    | 27.4    | 1.00     | 61.5      | 44.5      |
| V-Adrienne      | 29.2    | 6.1    | 21.0   | 11.0 | 0.4   | 59.9 | 28.4   | 70.0  | 26.9    | 30.8    | 1.60     | 87.1      | 64.2      |
| VV-Adrienne     | 28.5    | 6.3    | 22.1   | 11.3 | 0.7   | 65.3 | 28.0   | 65.0  | 25.3    | 30.8    | 1.60     | 76.0      | 52.9      |
| W-Velvet Night  | 30.3    | 6.5    | 21.5   | 13.2 | 0     | 56.3 | 29.6   | 70.0  | 27.7    | 32.7    | 1.70     | 68.2      | 55.5      |
| WW-Velvet Night | 28.0    | 5.6    | 20.1   | 9.8  | 0.4   | 69.0 | 27.0   | 85.0  | 25.0    | 30.1    | 1.70     | 61.2      | 51.9      |
| X-Talitha       | 29.8    | 5.8    | 19.5   | 11.6 | 0.2   | 59.4 | 28.6   | 75.0  | 26.1    | 32.9    | 2.20     | 68.1      | 50.6      |
| XX-Talitha      | 27.8    | 5.3    | 19.1   | 9.3  | 0     | 72.3 | 26.6   | 90.0  | 25.5    | 29.9    | 1.60     | 82.2      | 57.9      |
| Y-Ashberry      | 32.3    | 7.9    | 24.4   | 15.2 | 0.4   | 44.4 | 32.4   | 95.0  | 28.3    | 35.2    | 1.80     | 57.2      | 48.2      |
| Y-Carina        | 28.5    | 6.8    | 24.0   | 12.9 | 0.9   | 62.3 | 28.5   | 90.0  | 24.0    | 32.6    | 2.80     | 62.3      | 50.6      |

OFDA 2000 REPORT : SORTED BY TAG  
38 Wool Samples (38Records)

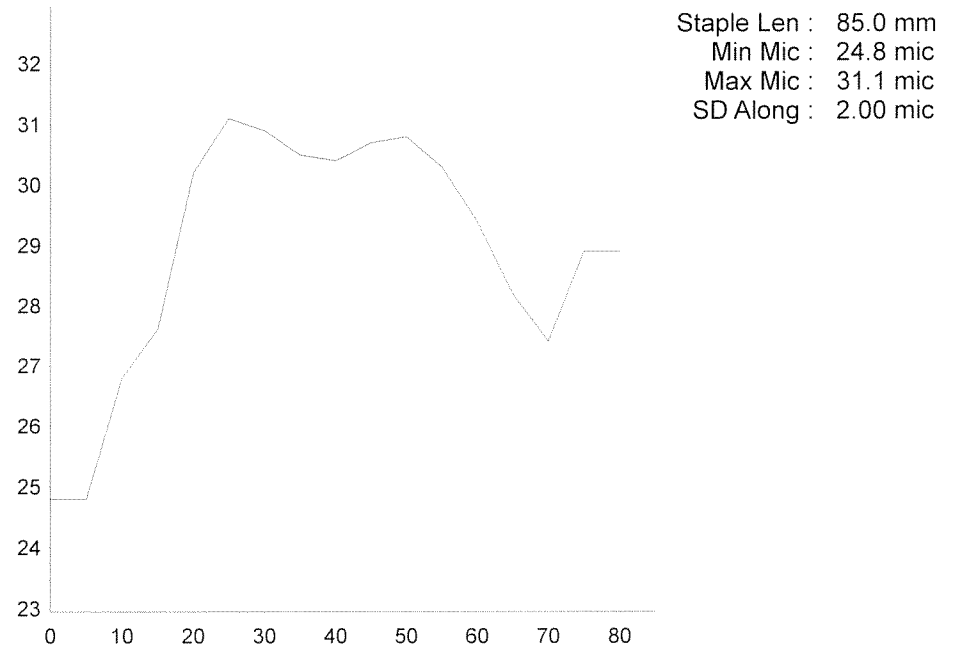
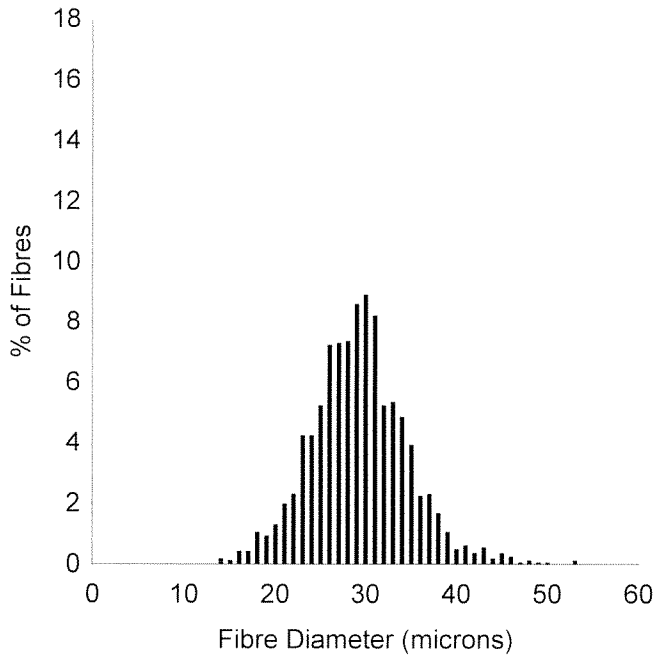
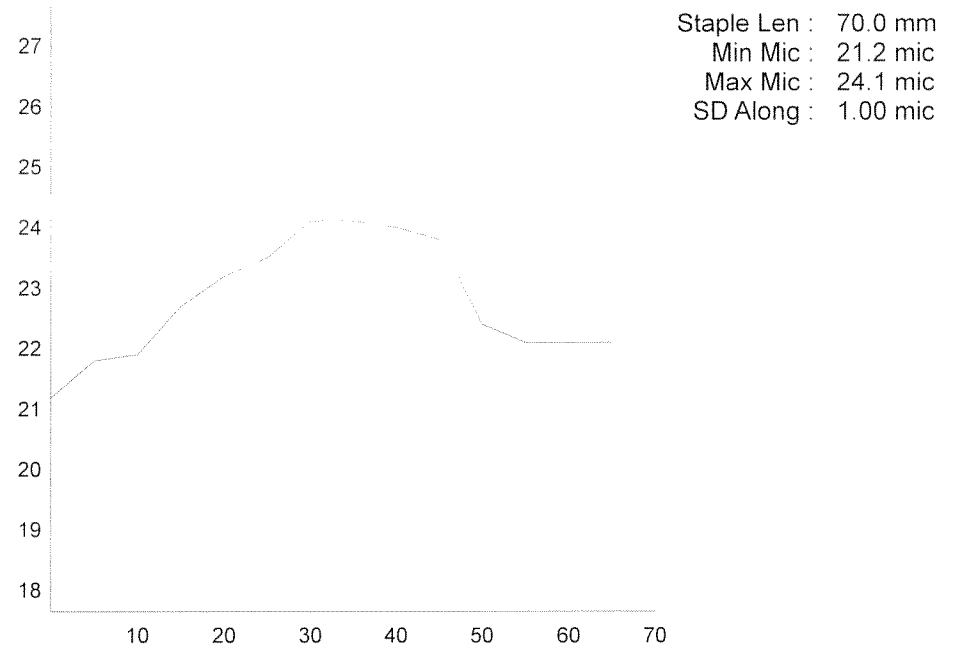
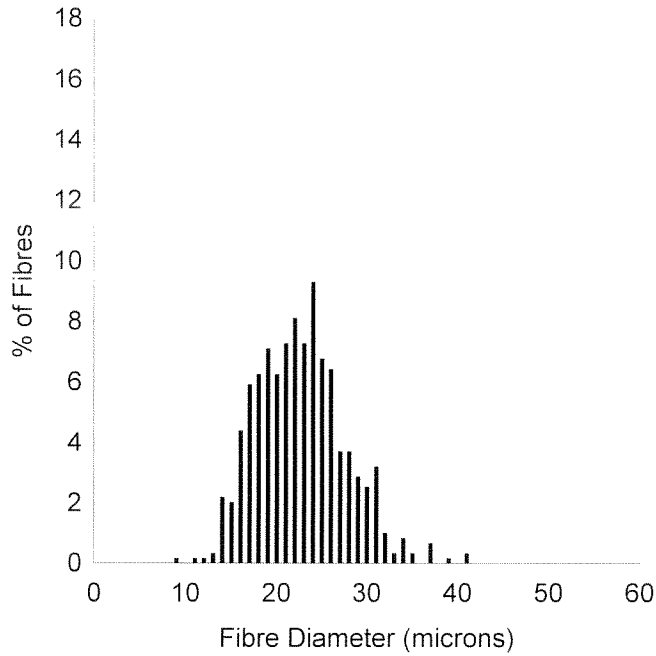
| Animal<br>Eartag | Mic<br>Ave | SD<br>Mic | CV<br>Mic | CEM  | <15<br>% | CF<br>% | SF<br>Mic | SL<br>mm | Min<br>Mic | Max<br>Mic | SD<br>Along | CRV<br>Dg/mm | SDC<br>Dg/mm |
|------------------|------------|-----------|-----------|------|----------|---------|-----------|----------|------------|------------|-------------|--------------|--------------|
| Averages         | 27.1       | 5.6       | 20.8      | 10.2 | 1.3      | 73.5    | 26.4      | 80.1     | 24.1       | 29.6       | 1.73        | 72.8         | 54.7         |
| Y-Sirius         | 25.8       | 5.4       | 21.0      | 9.8  | 0.8      | 82.2    | 25.1      | 75.0     | 22.4       | 29.5       | 2.00        | 69.1         | 53.1         |
| Y-Viking         | 27.9       | 4.6       | 16.4      | 7.7  | 0.2      | 71.6    | 26.2      | 75.0     | 22.2       | 30.0       | 2.60        | 63.8         | 47.2         |

**OFDA 2000 REPORT : SORTED BY TAG**  
 38 Wool Samples (38Records)

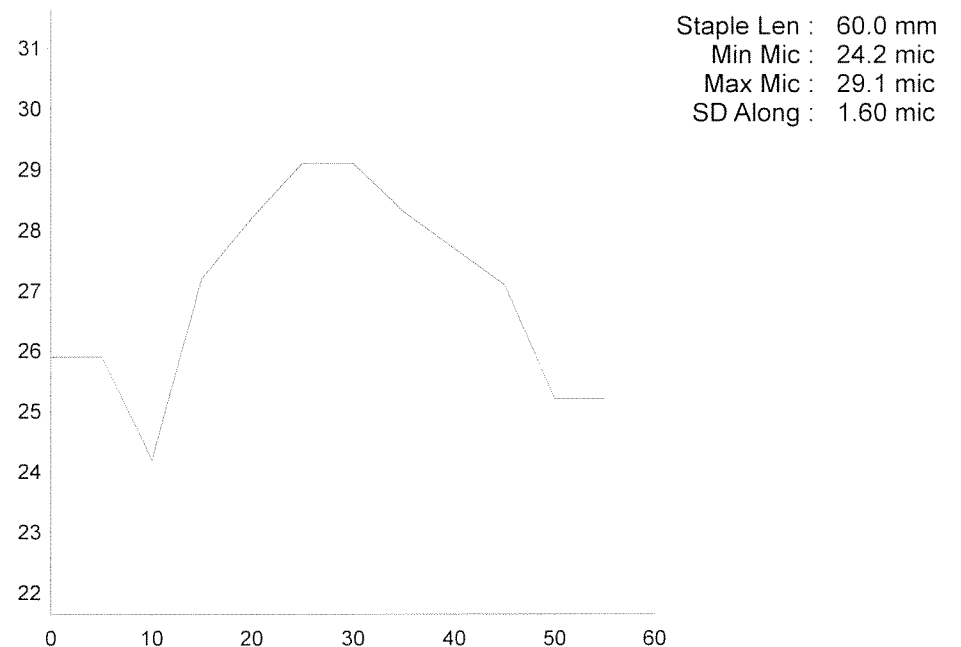
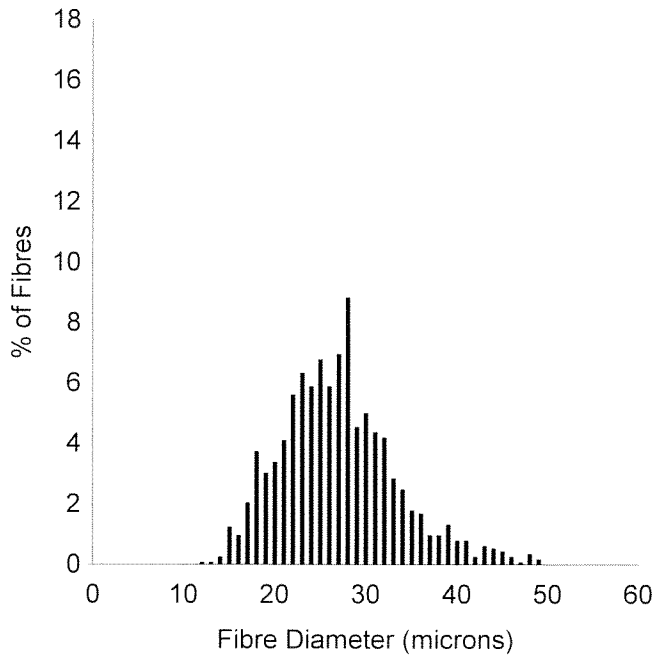
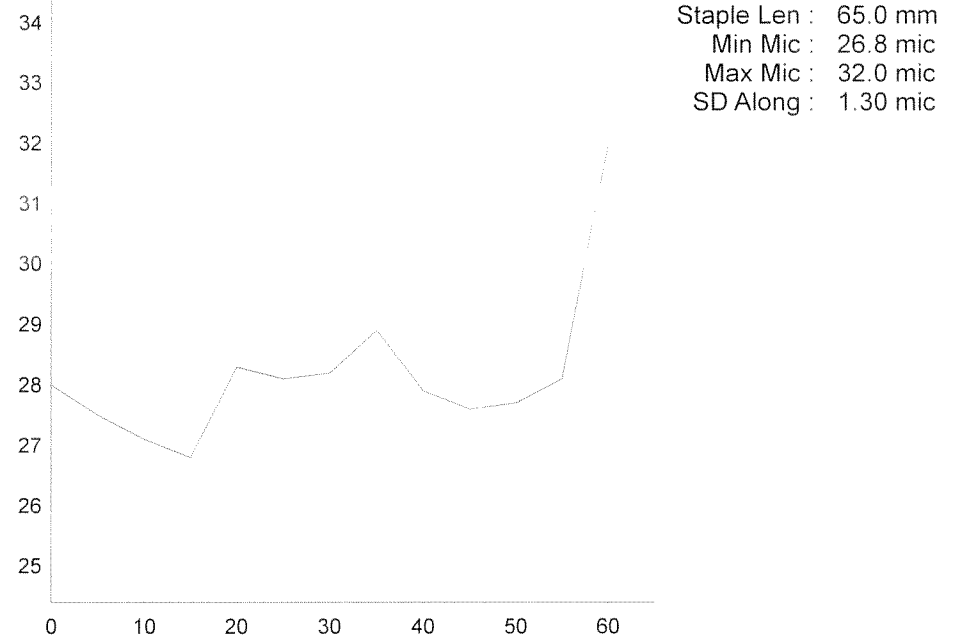
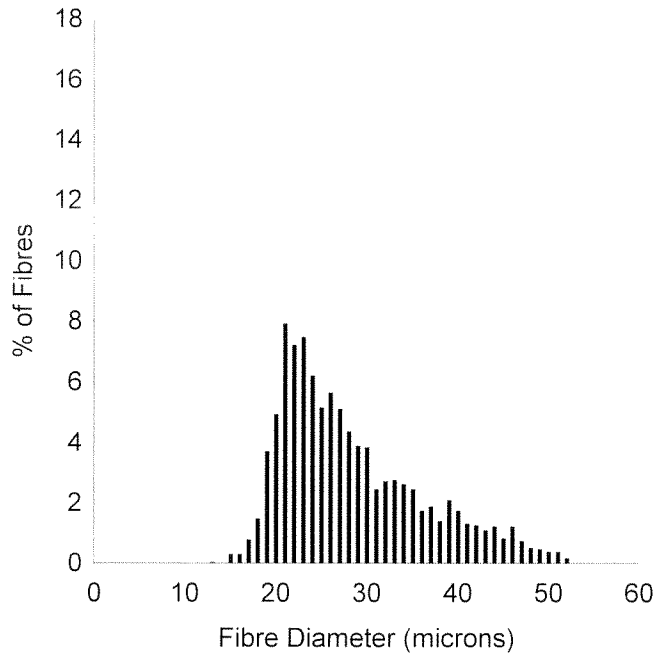
**Job Details**  
 Jeanne T. Dukerschein  
 Texas AgriLife Research Informational Test Only  
 Reference: 0293 - 0283  
 Tested: Mar 26, 2018



OFDA 2000 REPORT : SORTED BY TAG  
38 Wool Samples (38Records)



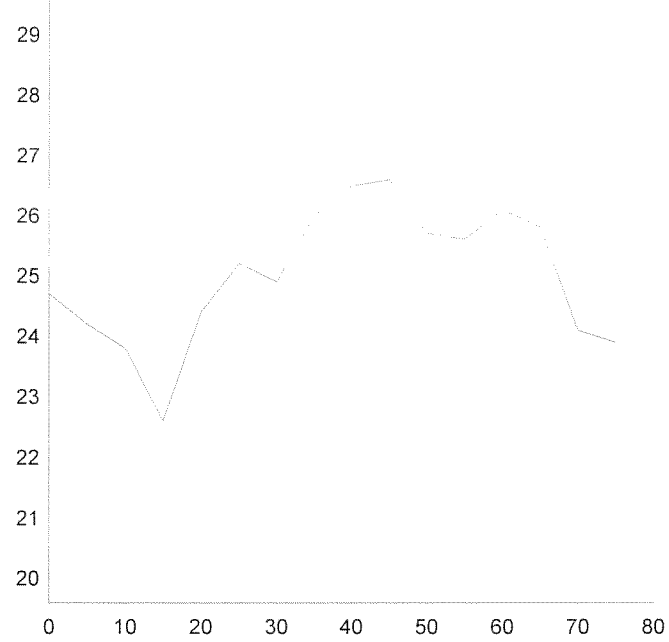
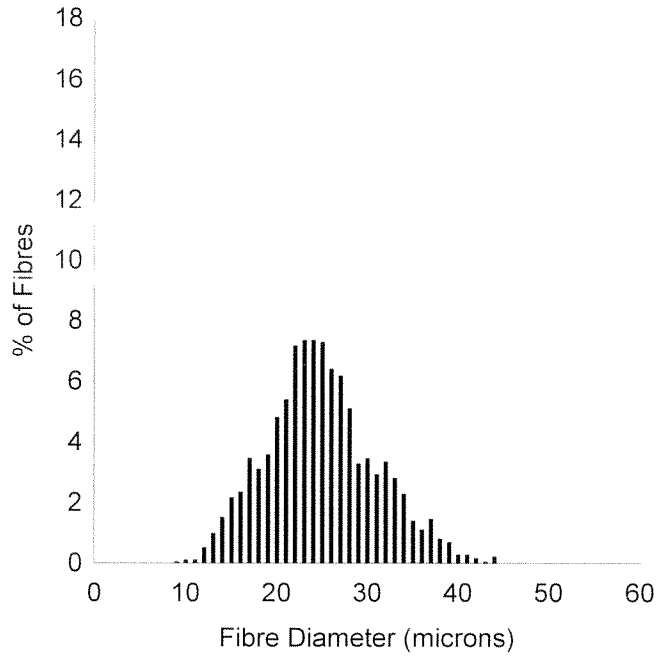
OFDA 2000 REPORT : SORTED BY TAG  
38 Wool Samples (38Records)



OFDA 2000 REPORT : SORTED BY TAG  
38 Wool Samples (38Records)

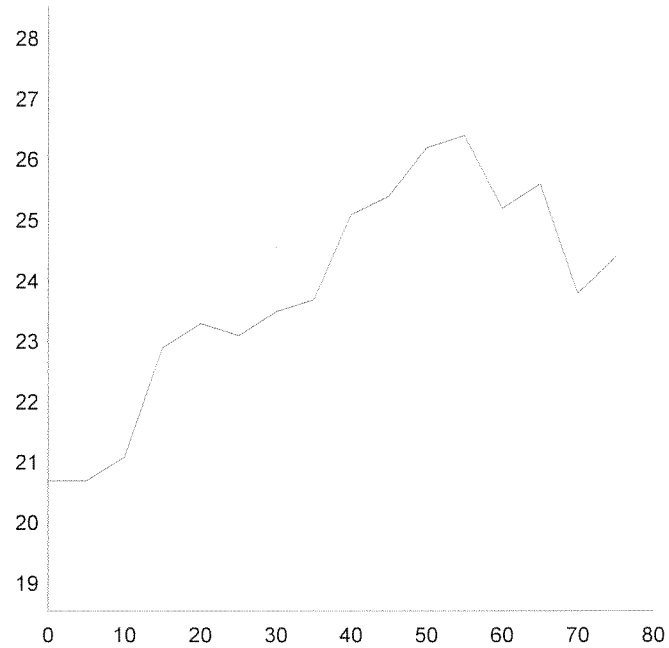
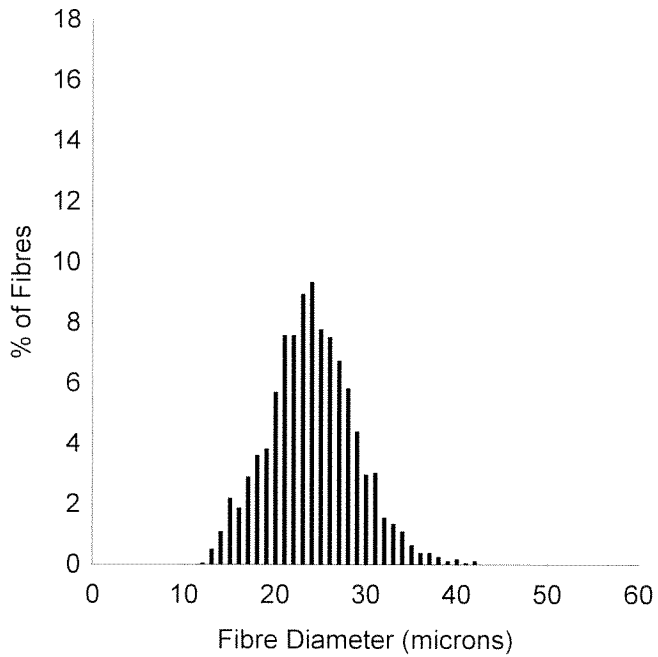
EarTag : D-Merlin W  
 Micron : 24.9 mic  
 SD : 6.0 mic  
 CVD : 24.2 %  
 CEM : 11.3 mic  
 <15 : 3.4 %  
 CF : 82.0 %  
 SF : 24.9 mic  
 CRV : 83.5 Dg/mm  
 SDC : 59.5 Dg/mm

Staple Len : 80.0 mm  
 Min Mic : 22.6 mic  
 Max Mic : 26.6 mic  
 SD Along : 1.10 mic

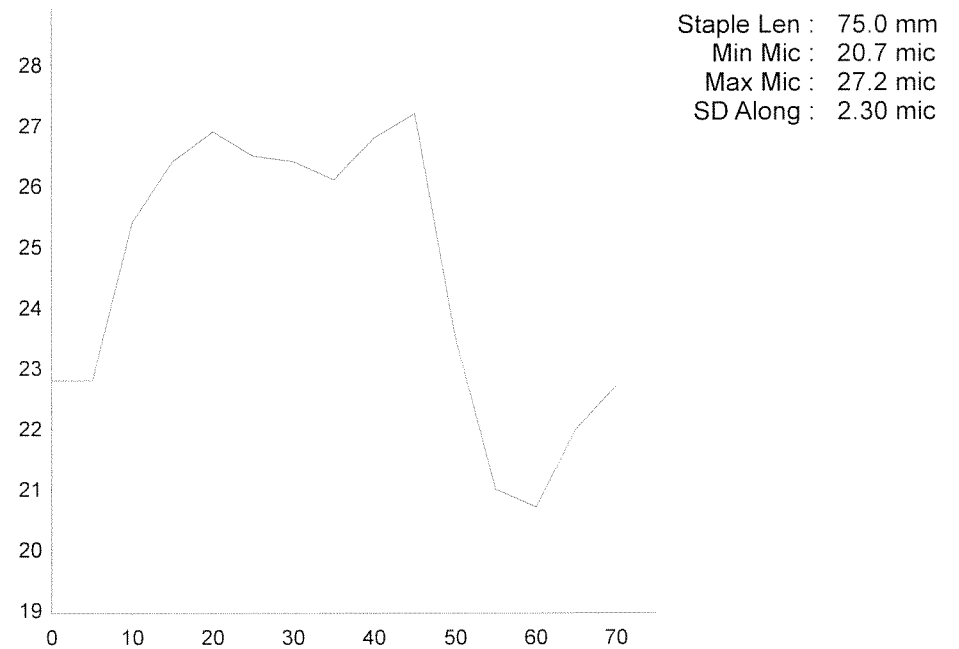
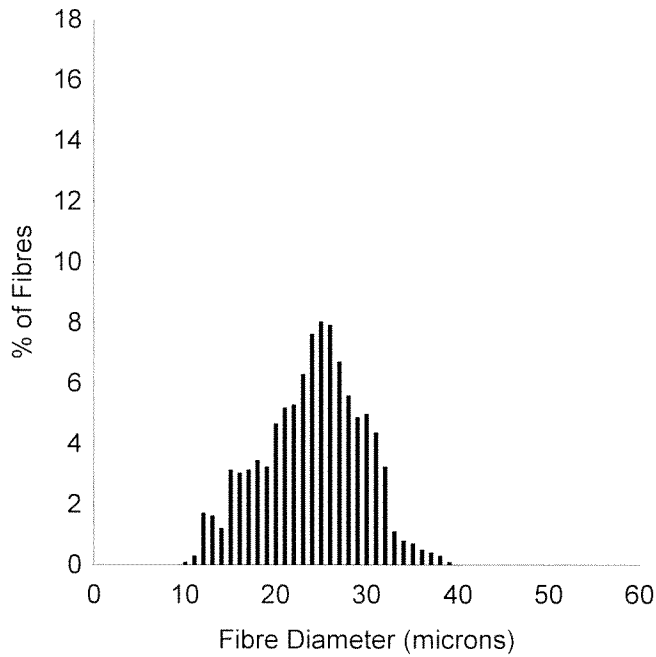
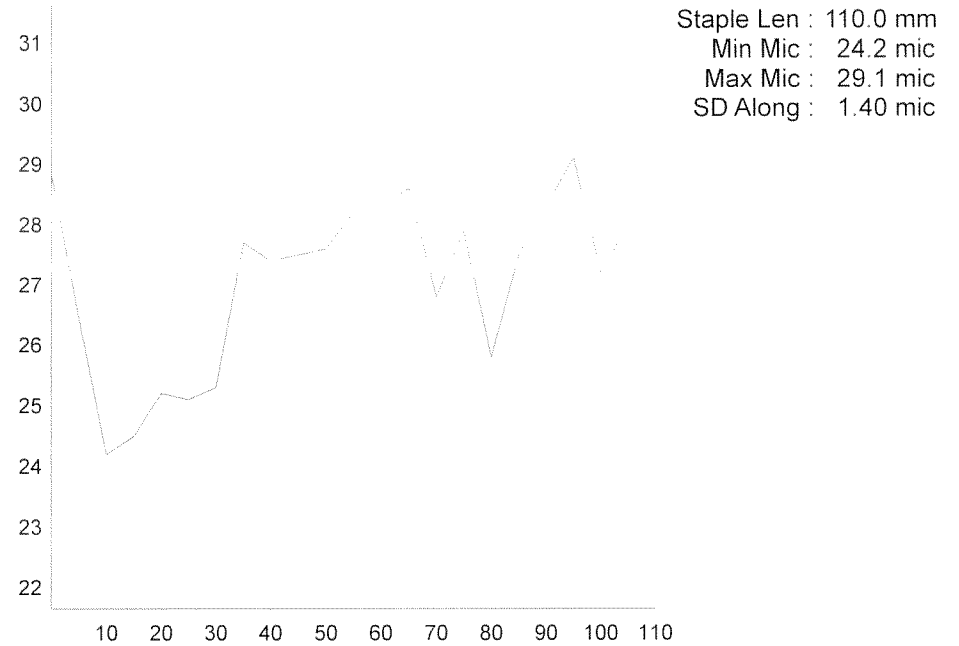
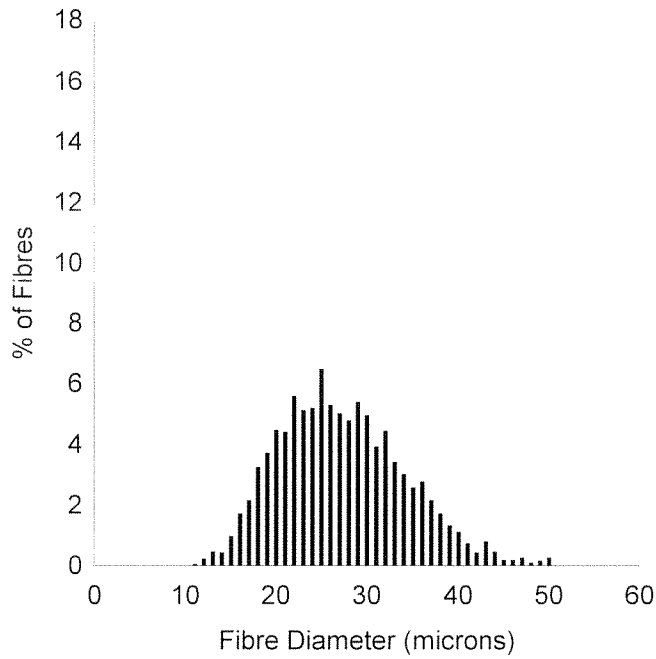


EarTag : E-Percival  
 Micron : 24.1 mic  
 SD : 4.8 mic  
 CVD : 20.0 %  
 CEM : 8.7 mic  
 <15 : 1.7 %  
 CF : 90.7 %  
 SF : 23.3 mic  
 CRV : 86.1 Dg/mm  
 SDC : 58.2 Dg/mm

Staple Len : 80.0 mm  
 Min Mic : 20.7 mic  
 Max Mic : 26.4 mic  
 SD Along : 1.80 mic

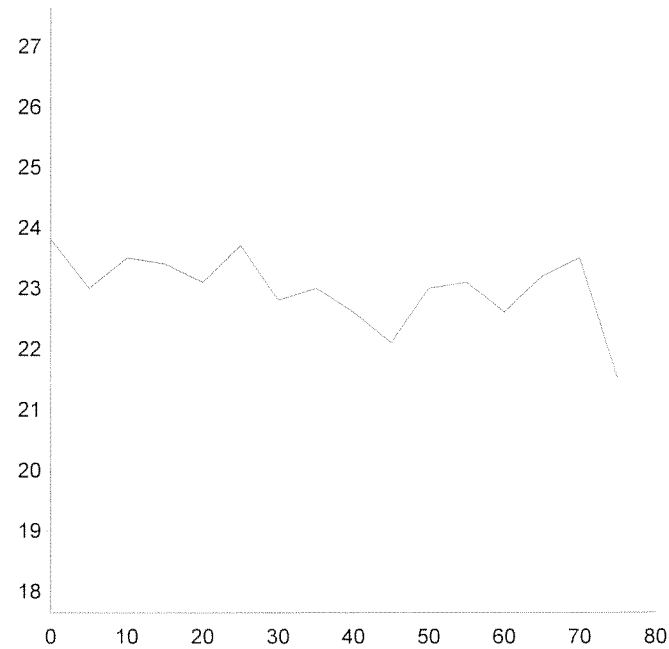
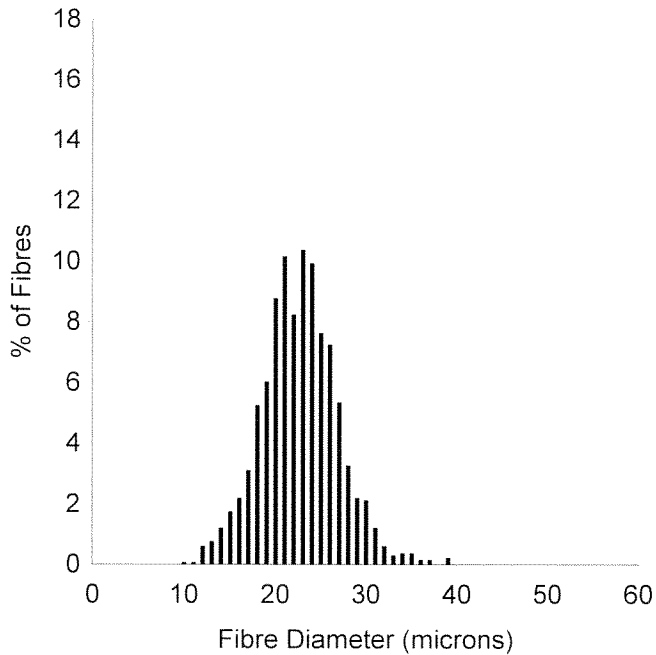
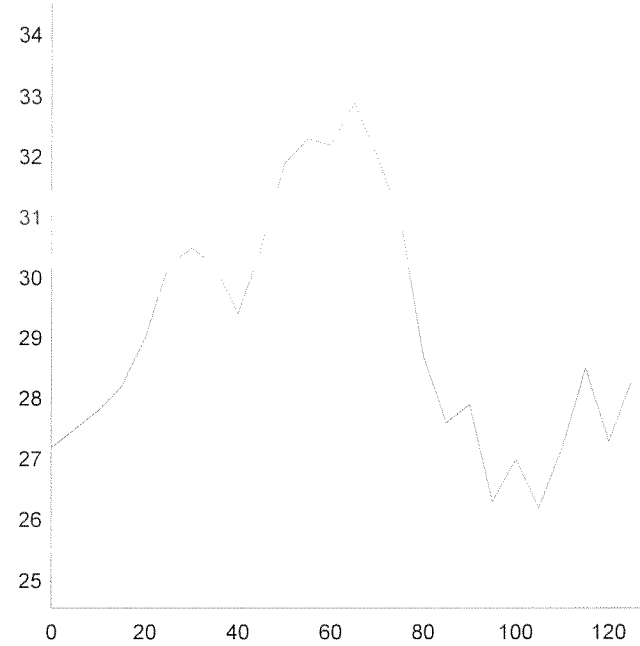
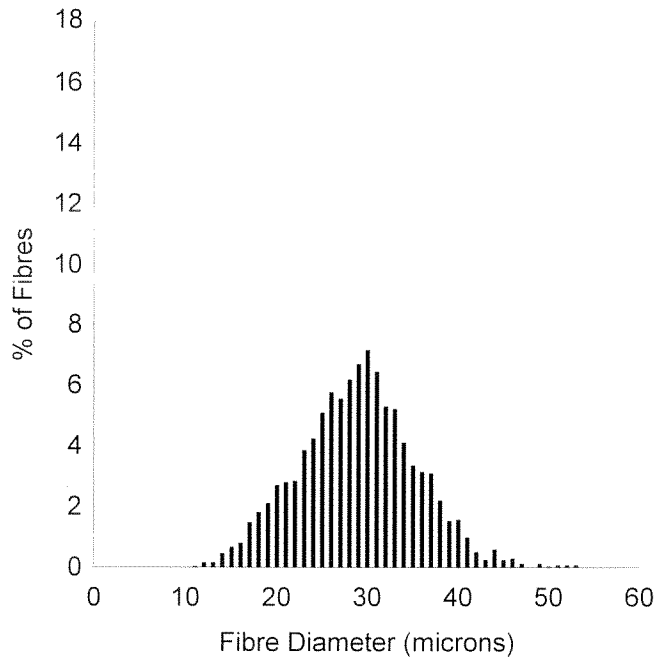


OFDA 2000 REPORT : SORTED BY TAG  
38 Wool Samples (38Records)



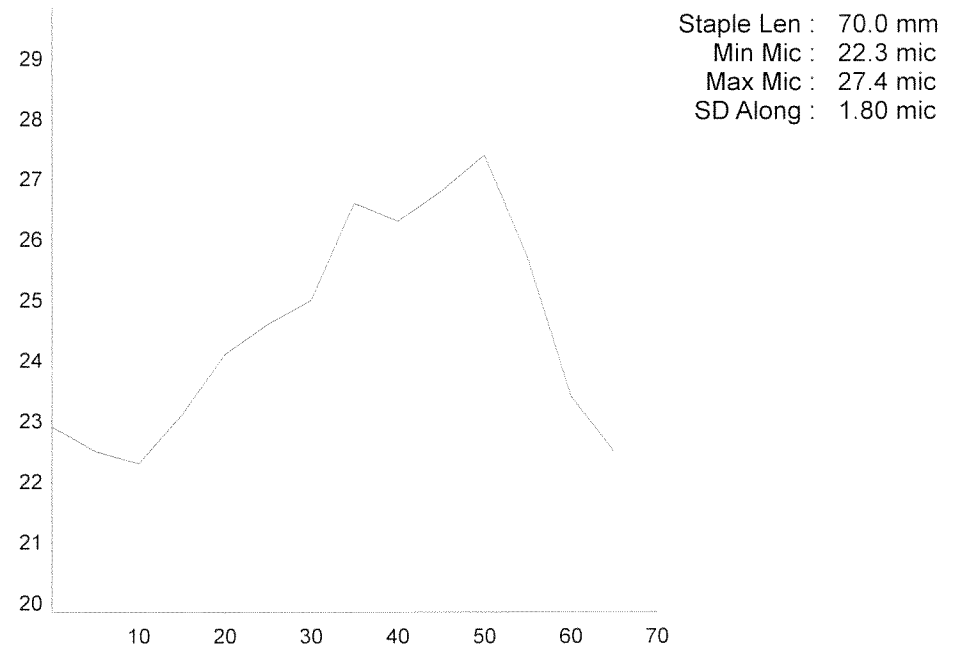
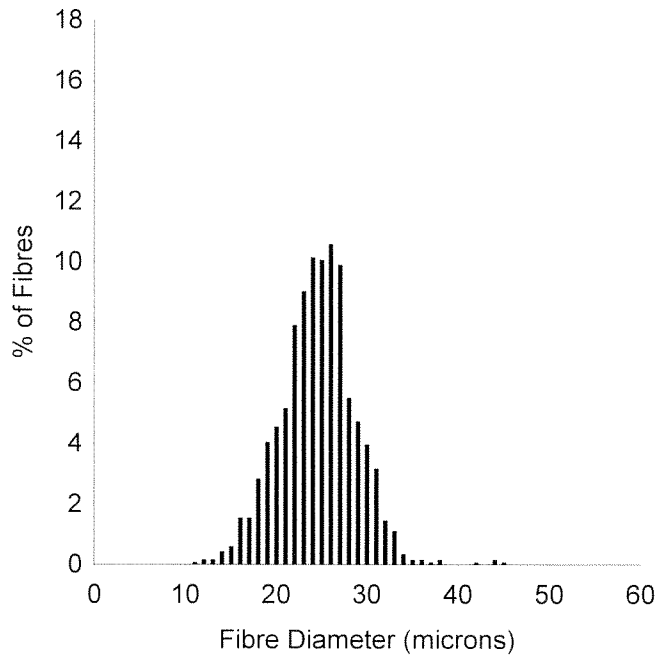
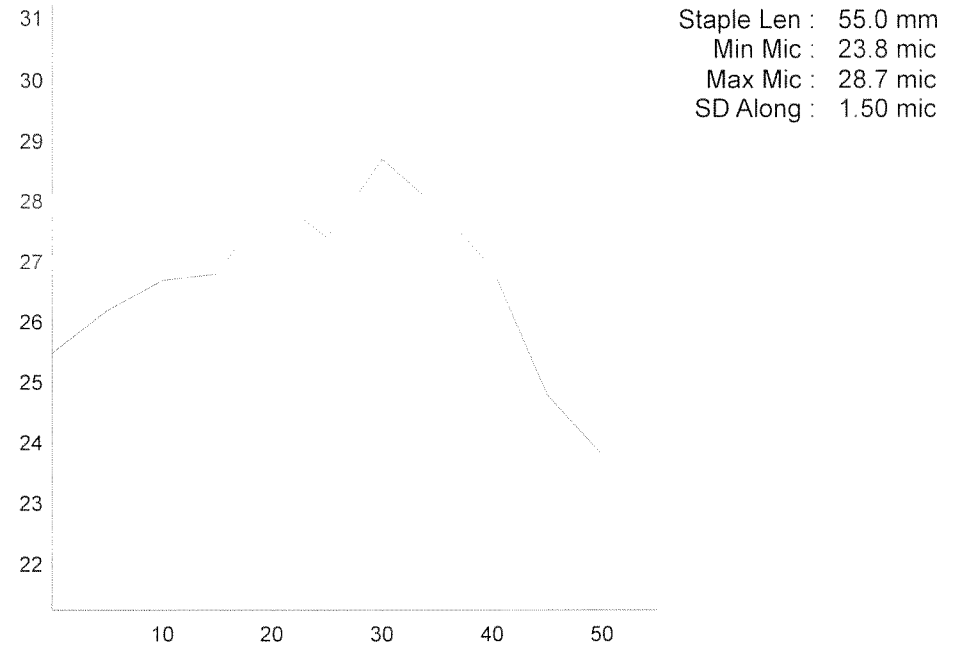
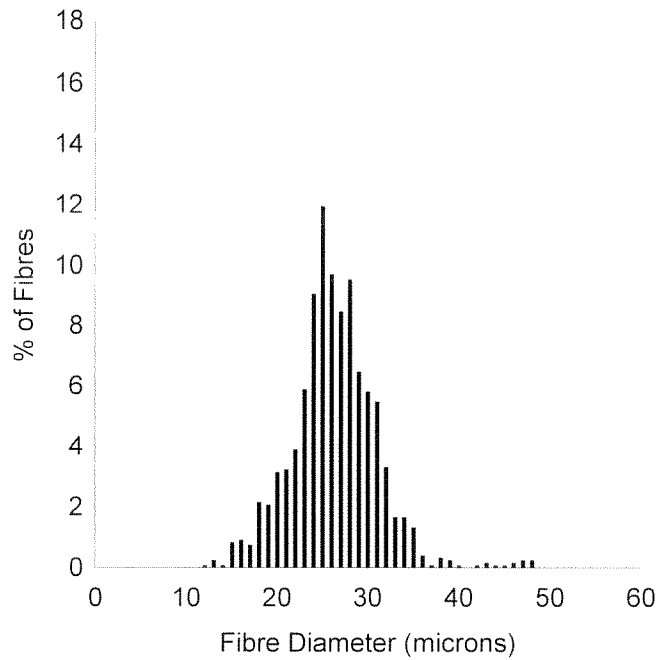
# OFDA 2000 REPORT : SORTED BY TAG

38 Wool Samples (38Records)

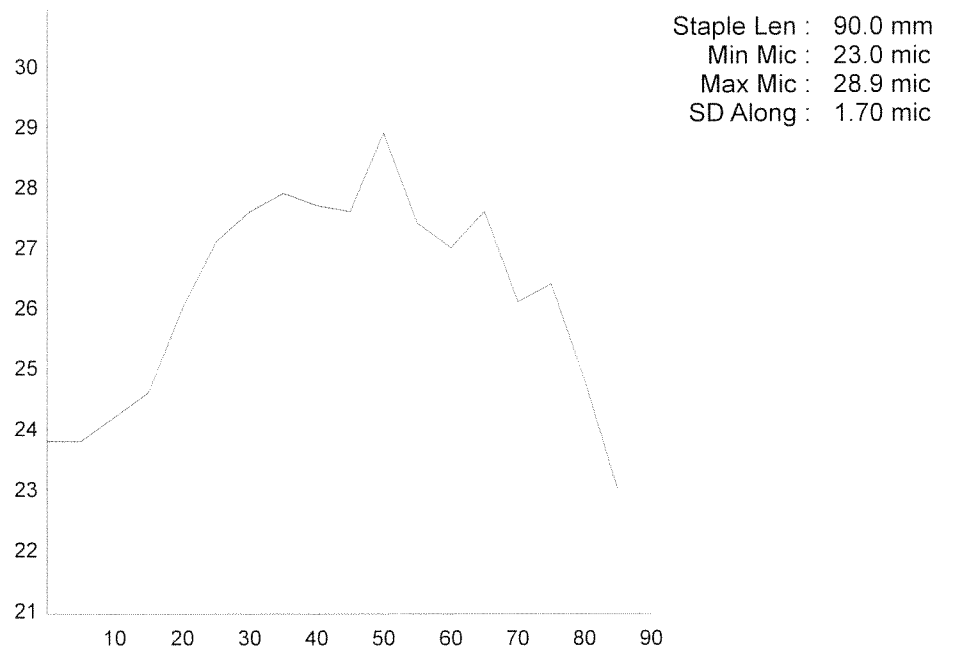
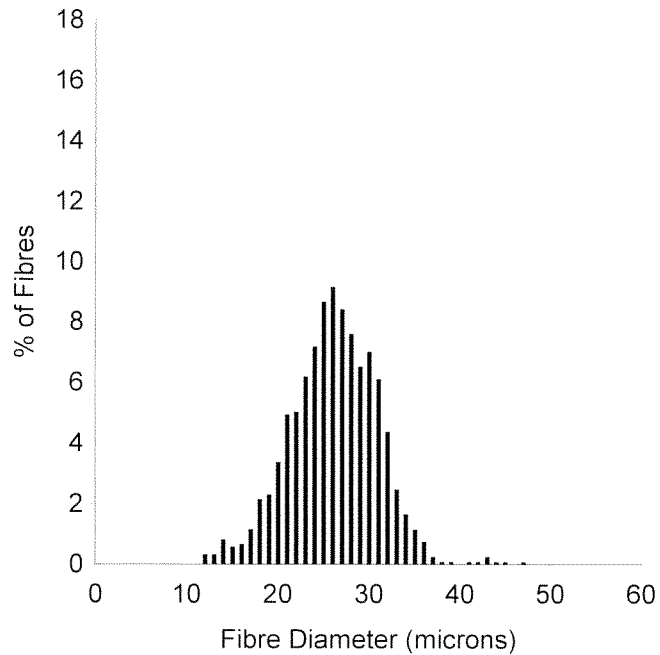
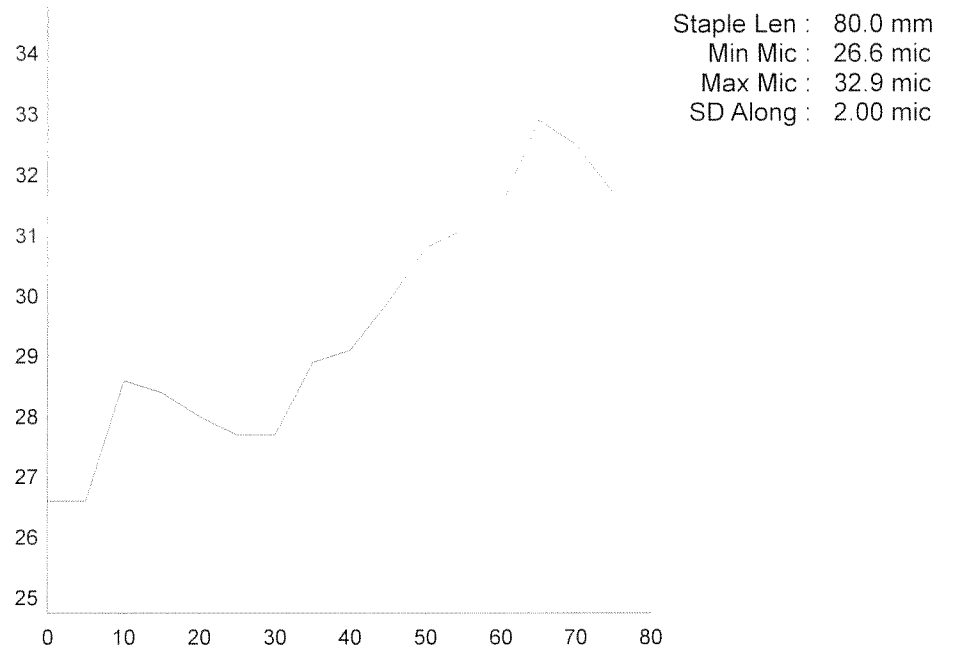
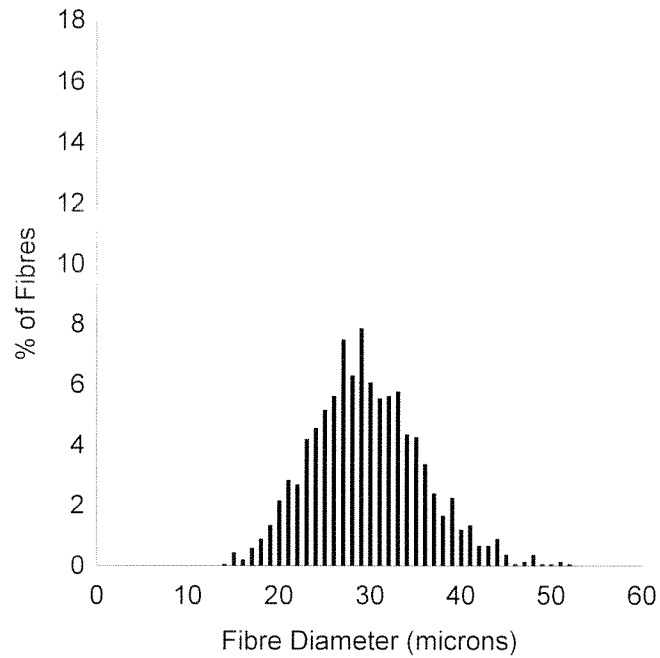




OFDA 2000 REPORT : SORTED BY TAG  
38 Wool Samples (38Records)



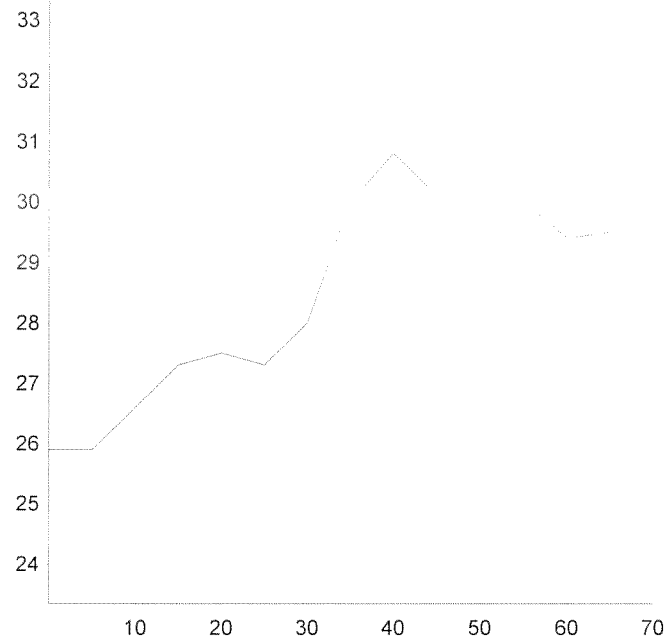
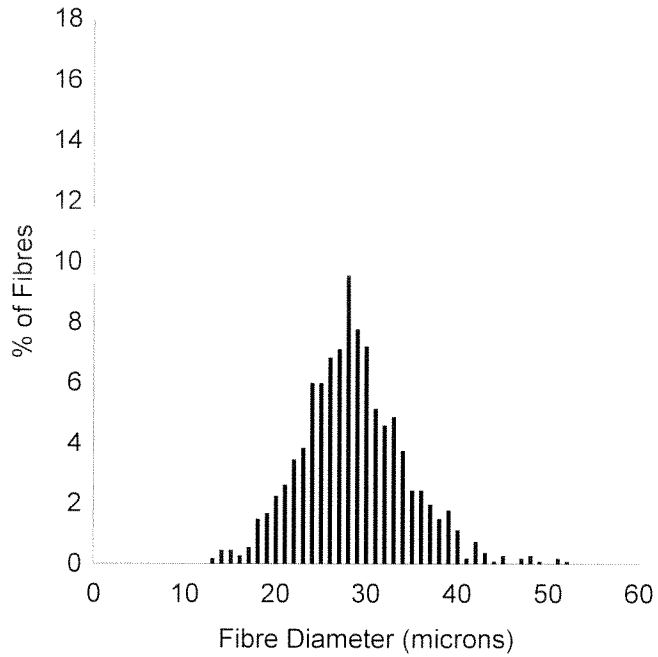
OFDA 2000 REPORT : SORTED BY TAG  
38 Wool Samples (38Records)



OFDA 2000 REPORT : SORTED BY TAG  
38 Wool Samples (38Records)

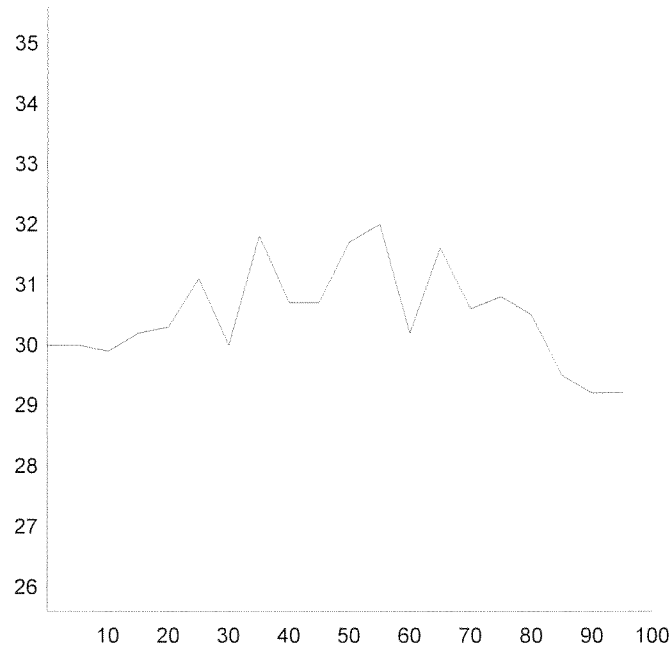
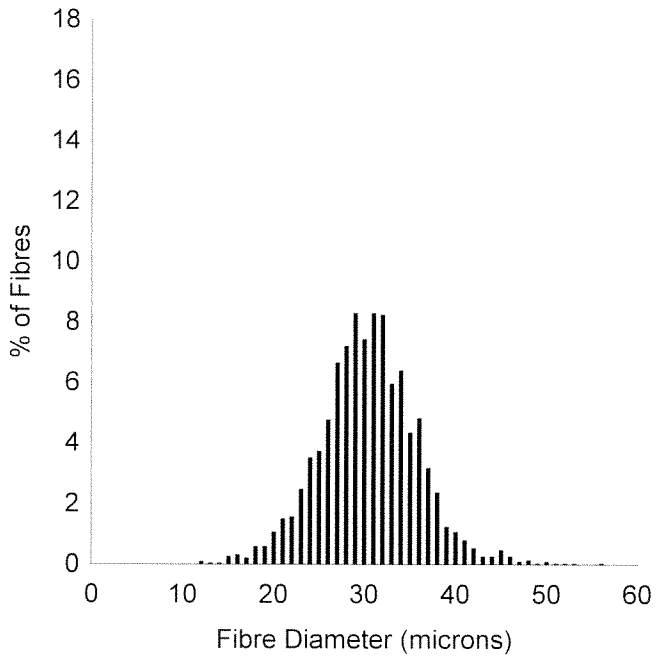
EarTag : M-Spiceca  
 Micron : 28.5 mic  
 SD : 5.8 mic  
 CVD : 20.4 %  
 CEM : 10.7 mic  
 <15 : 0.7 %  
 CF : 67.9 %  
 SF : 27.6 mic  
 CRV : 70.1 Dg/mm  
 SDC : 55.1 Dg/mm

Staple Len : 70.0 mm  
 Min Mic : 25.9 mic  
 Max Mic : 30.8 mic  
 SD Along : 1.70 mic

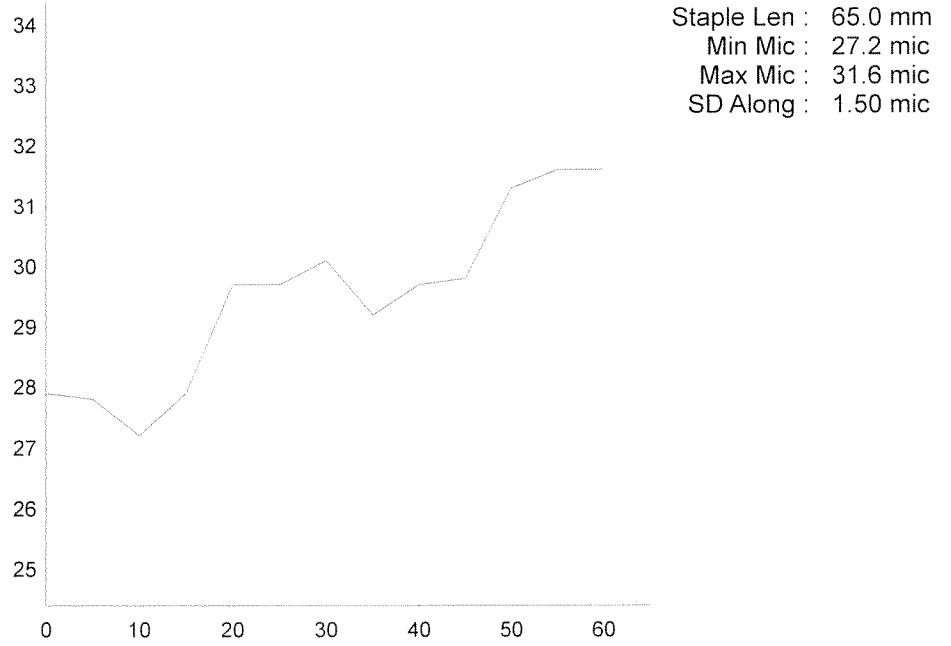
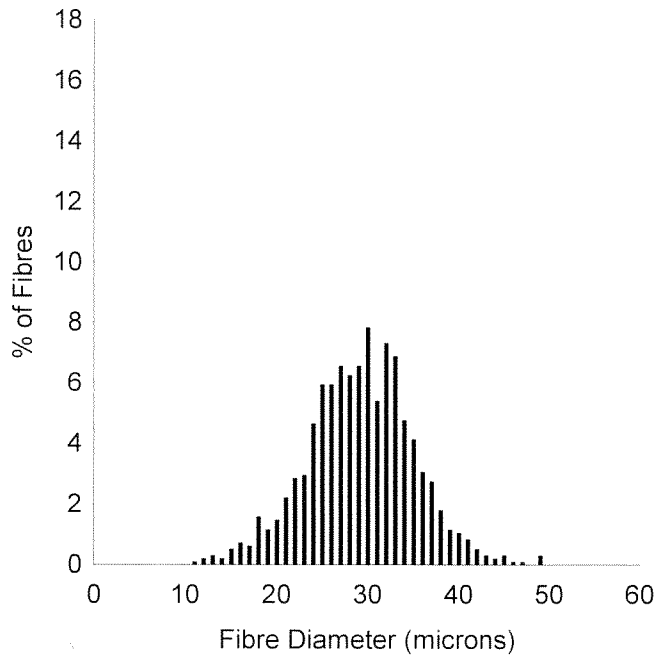
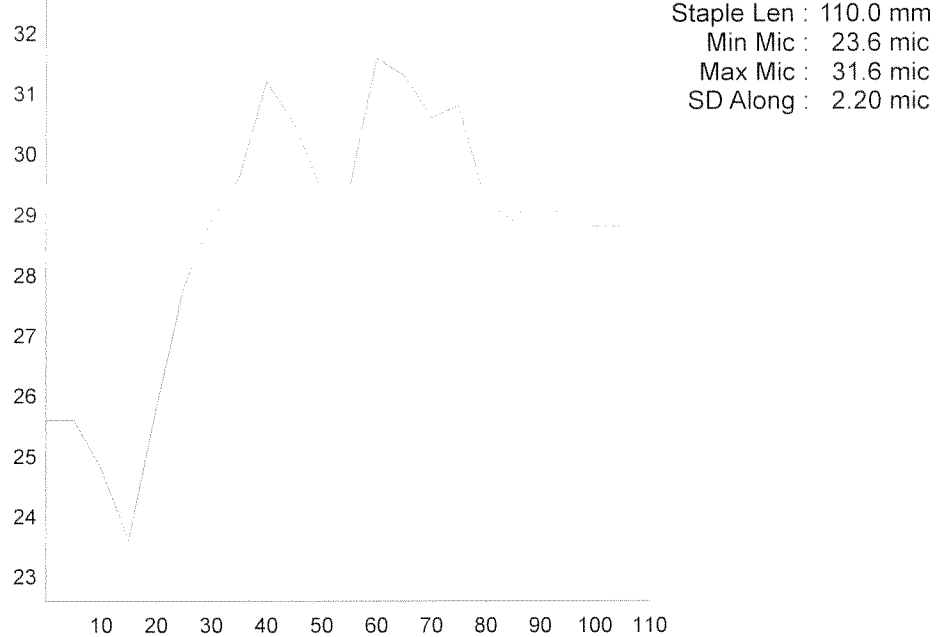
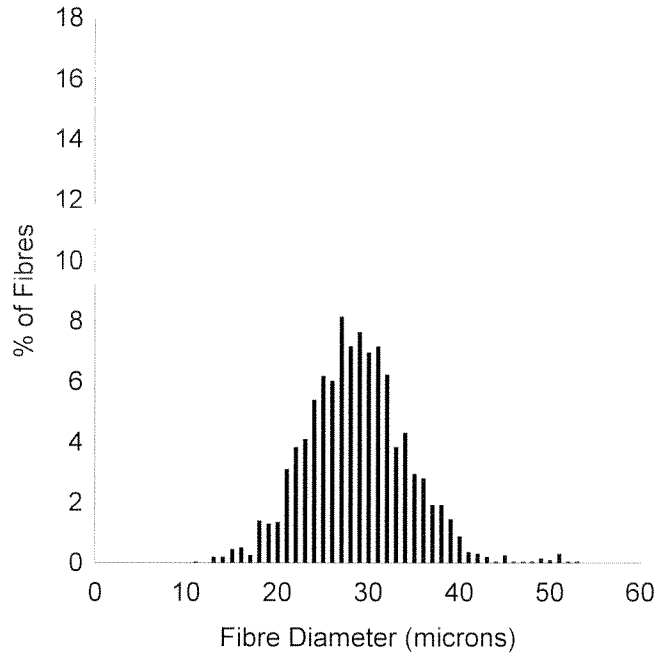


EarTag : N-Noss  
 Micron : 30.4 mic  
 SD : 5.4 mic  
 CVD : 17.8 %  
 CEM : 9.1 mic  
 <15 : 0.2 %  
 CF : 50.6 %  
 SF : 28.9 mic  
 CRV : 49.5 Dg/mm  
 SDC : 37.6 Dg/mm

Staple Len : 100.0 mm  
 Min Mic : 29.2 mic  
 Max Mic : 32.0 mic  
 SD Along : 0.80 mic



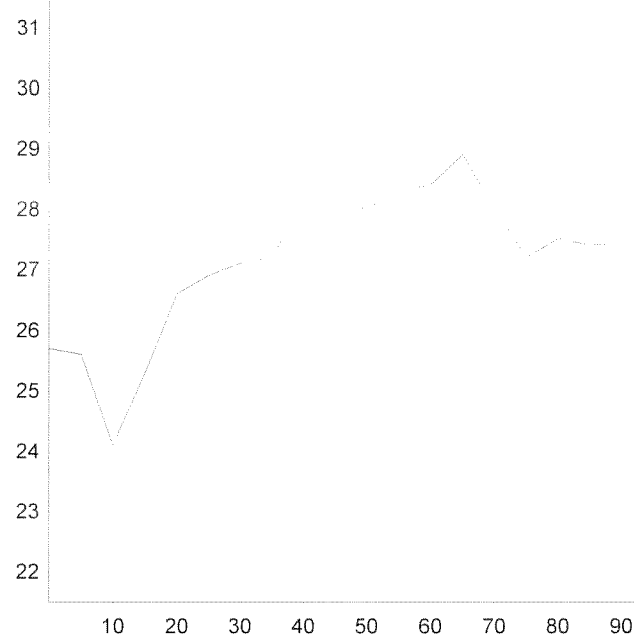
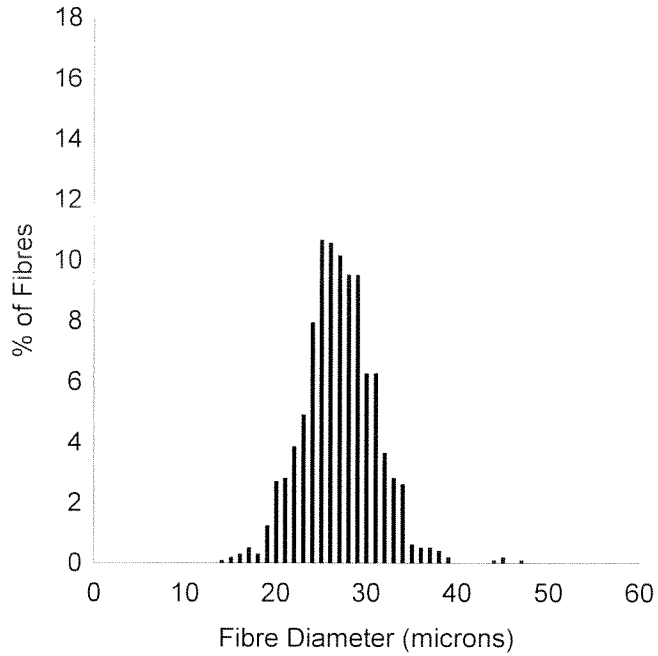
OFDA 2000 REPORT : SORTED BY TAG  
38 Wool Samples (38Records)



OFDA 2000 REPORT : SORTED BY TAG  
38 Wool Samples (38Records)

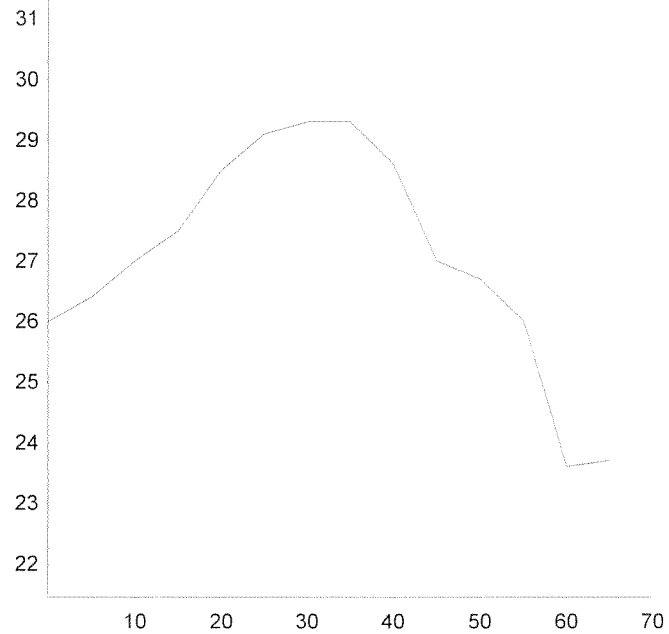
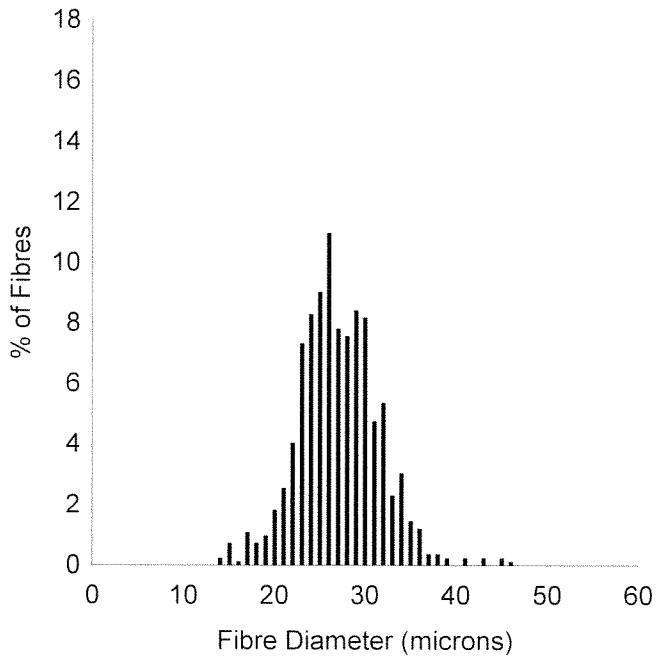
EarTag : OO-Leda  
 Micron : 27.0 mic  
 SD : 4.1 mic  
 CVD : 15.1 %  
 CEM : 7.1 mic  
 <15 : 0.1 %  
 CF : 81.9 %  
 SF : 25.1 mic  
 CRV : 78.0 Dg/mm  
 SDC : 61.1 Dg/mm

Staple Len : 95.0 mm  
 Min Mic : 24.1 mic  
 Max Mic : 28.9 mic  
 SD Along : 1.20 mic

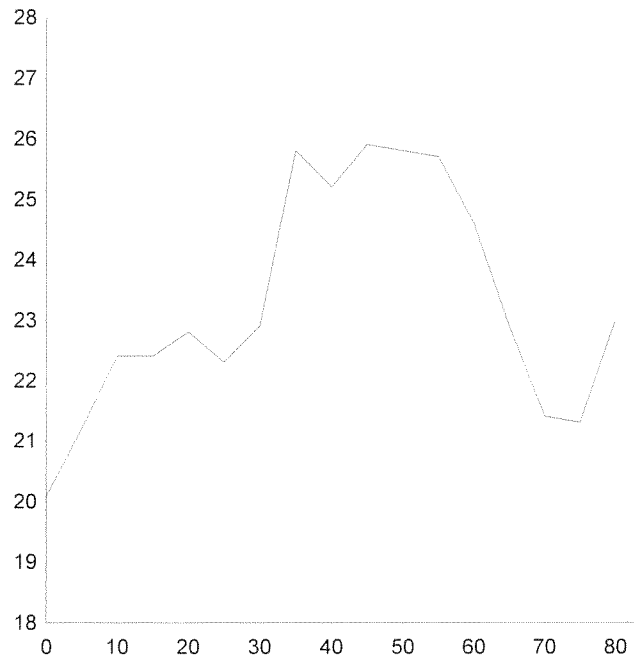
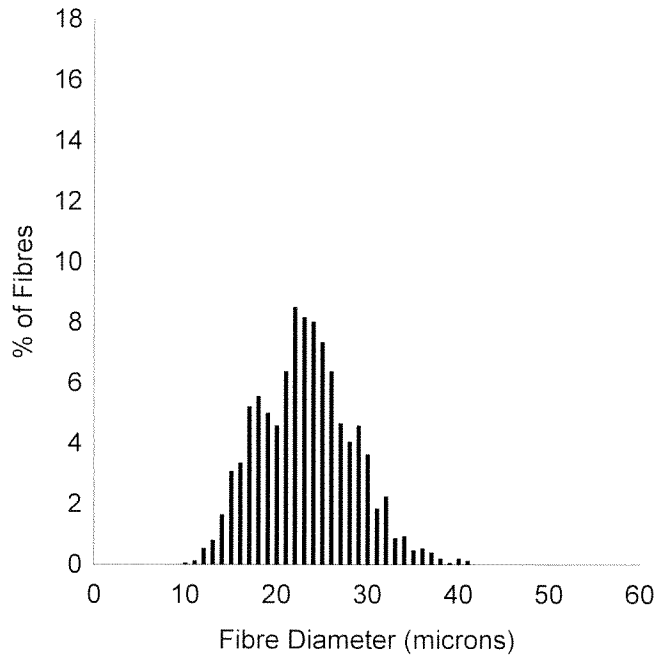
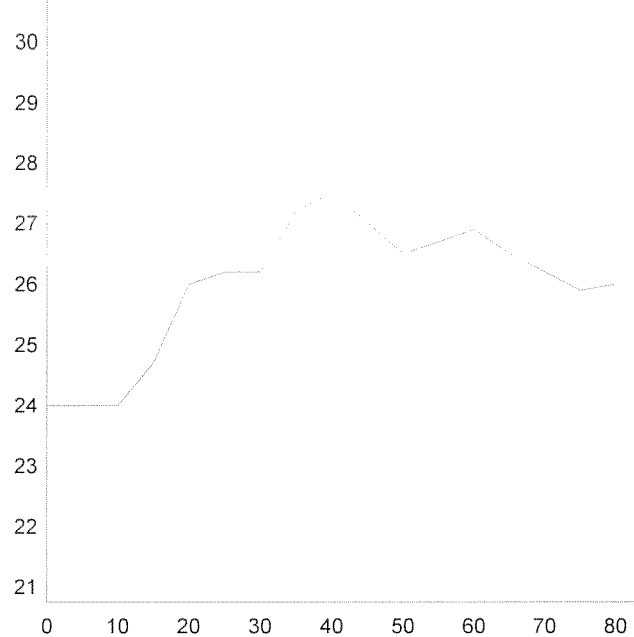
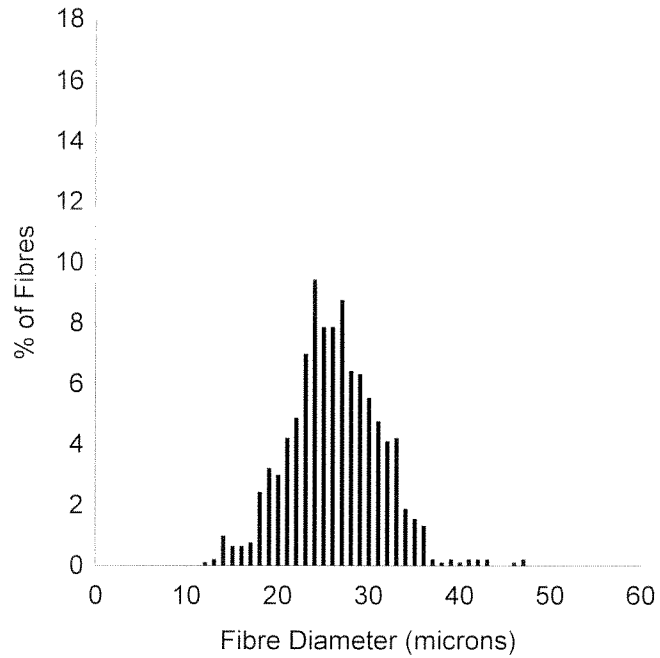


EarTag : P-Mirabelle  
 Micron : 27.1 mic  
 SD : 4.5 mic  
 CVD : 16.6 %  
 CEM : 7.8 mic  
 <15 : 0.2 %  
 CF : 80.0 %  
 SF : 25.4 mic  
 CRV : 93.0 Dg/mm  
 SDC : 65.9 Dg/mm

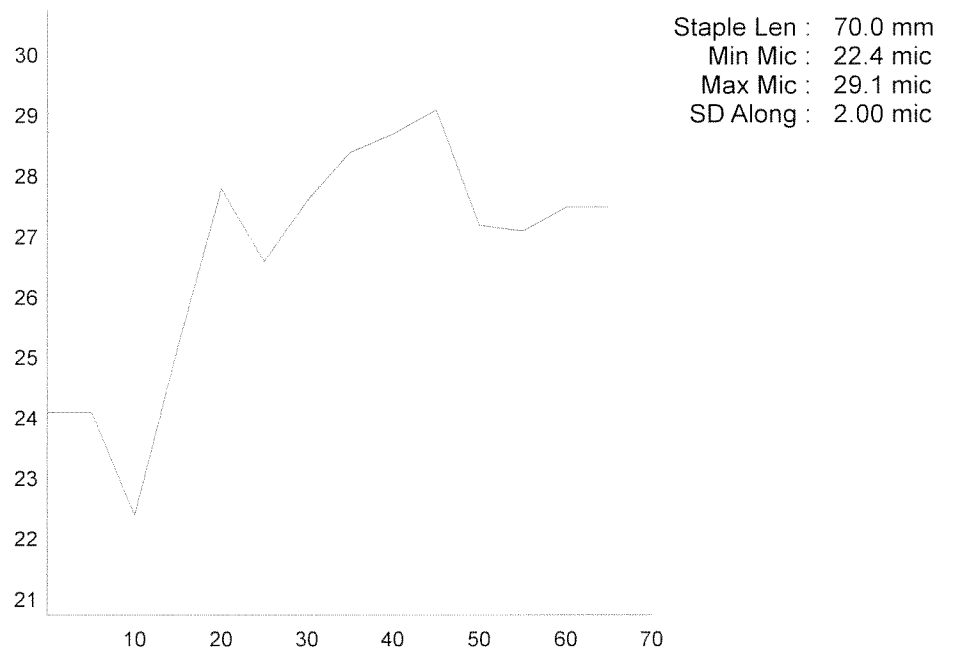
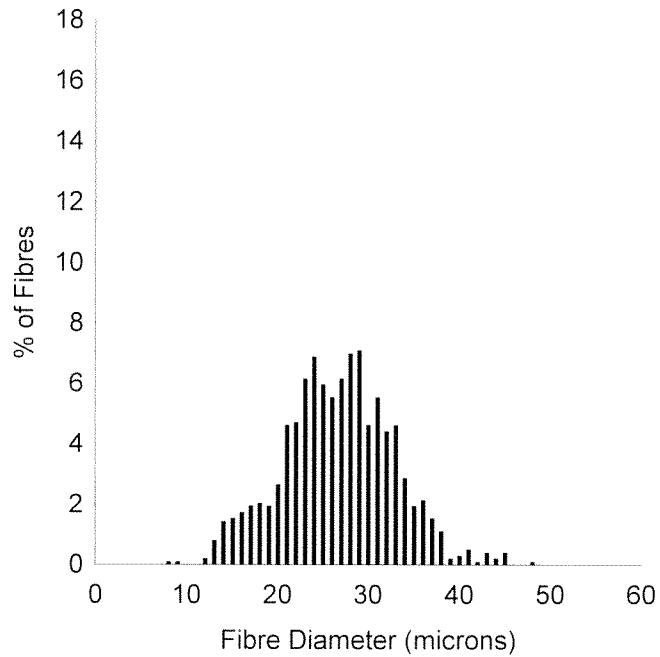
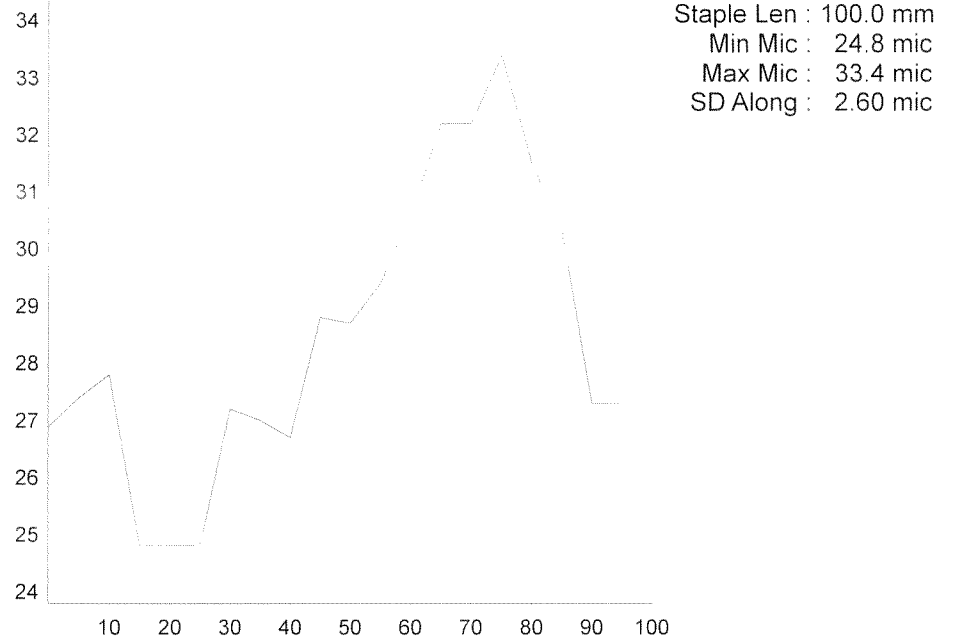
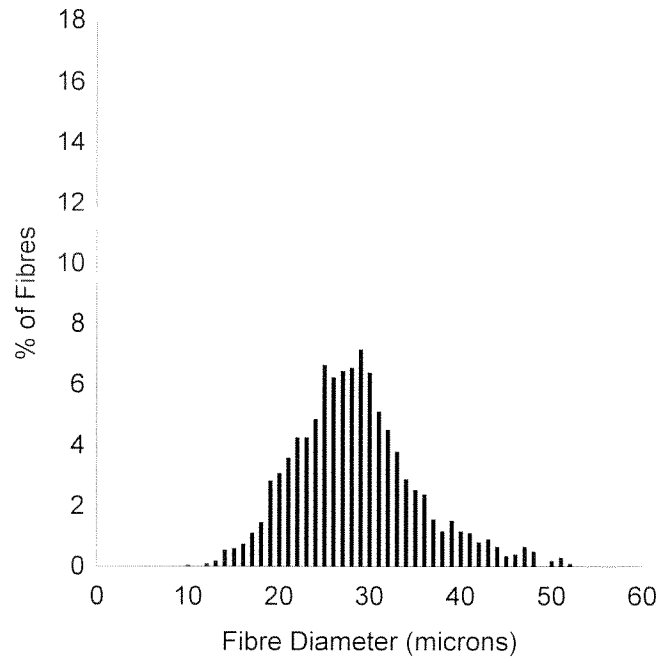
Staple Len : 70.0 mm  
 Min Mic : 23.6 mic  
 Max Mic : 29.3 mic  
 SD Along : 1.90 mic



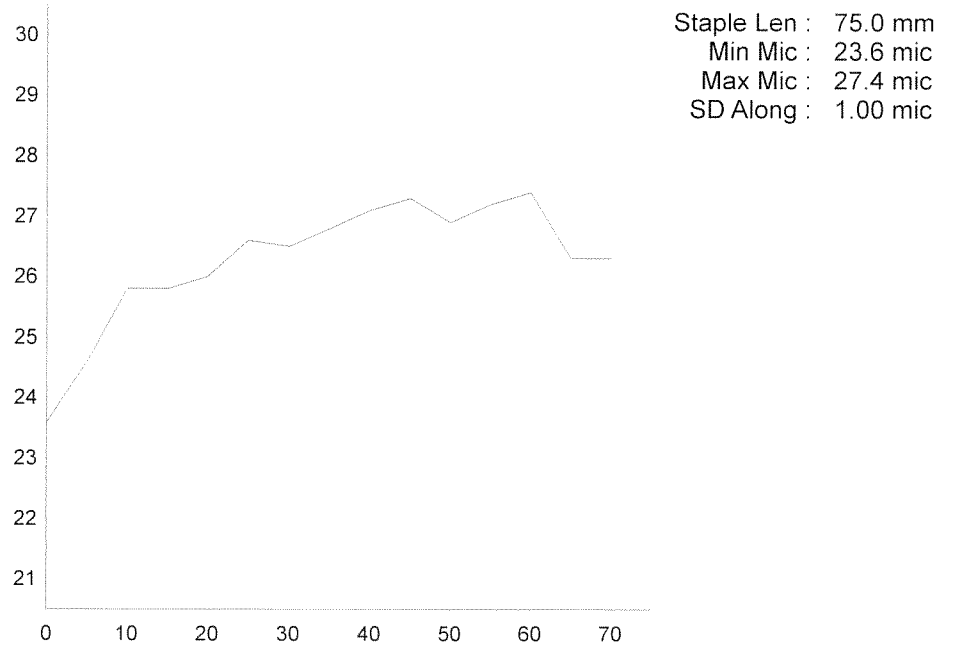
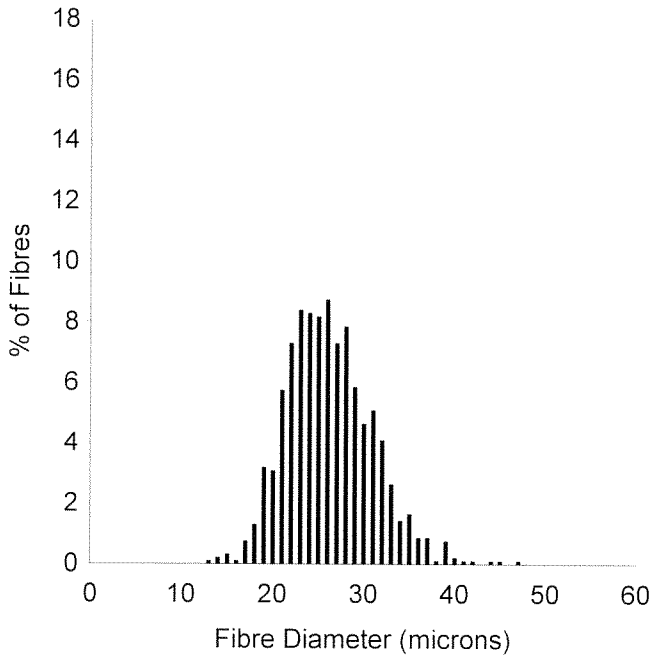
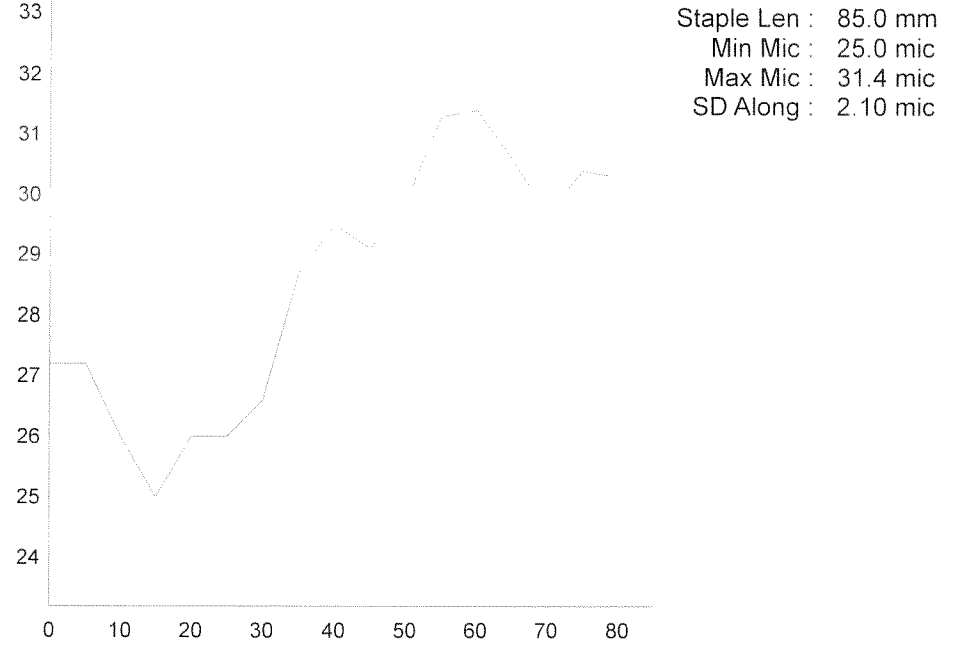
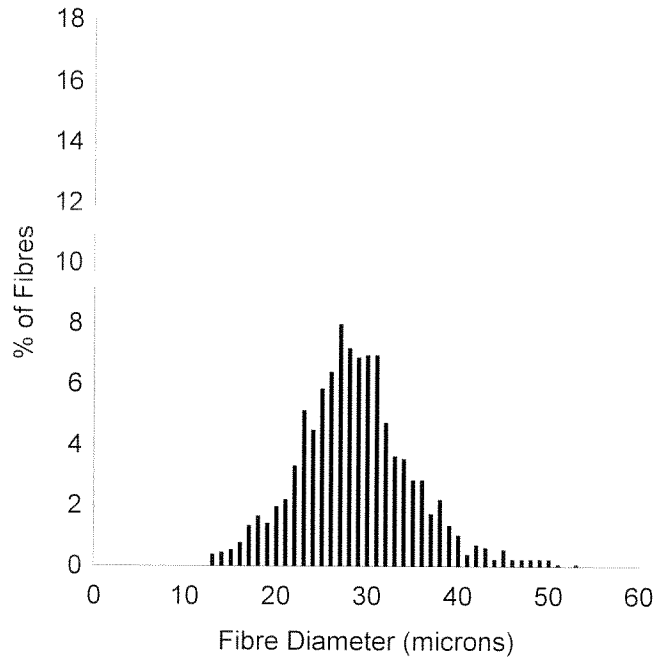
OFDA 2000 REPORT : SORTED BY TAG  
38 Wool Samples (38Records)



OFDA 2000 REPORT : SORTED BY TAG  
38 Wool Samples (38Records)



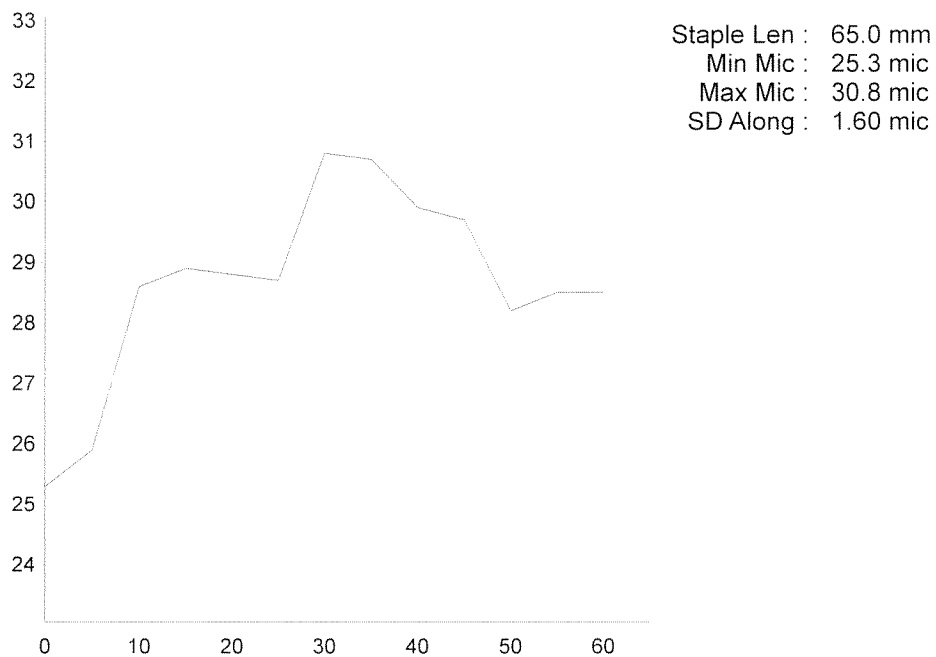
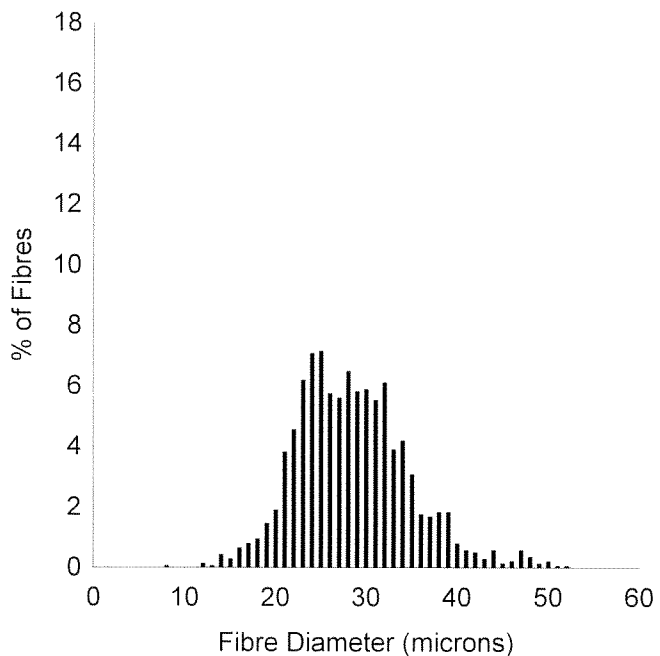
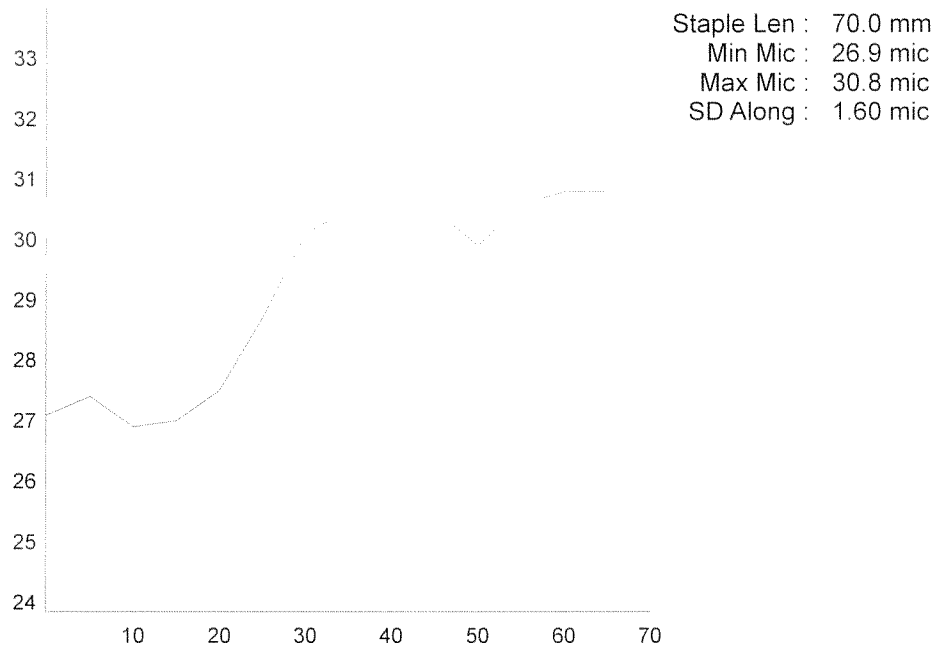
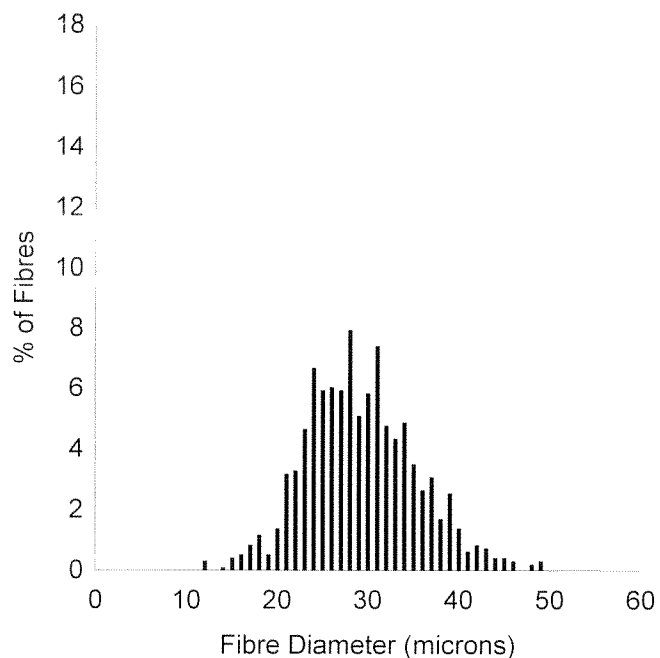
OFDA 2000 REPORT : SORTED BY TAG  
38 Wool Samples (38Records)





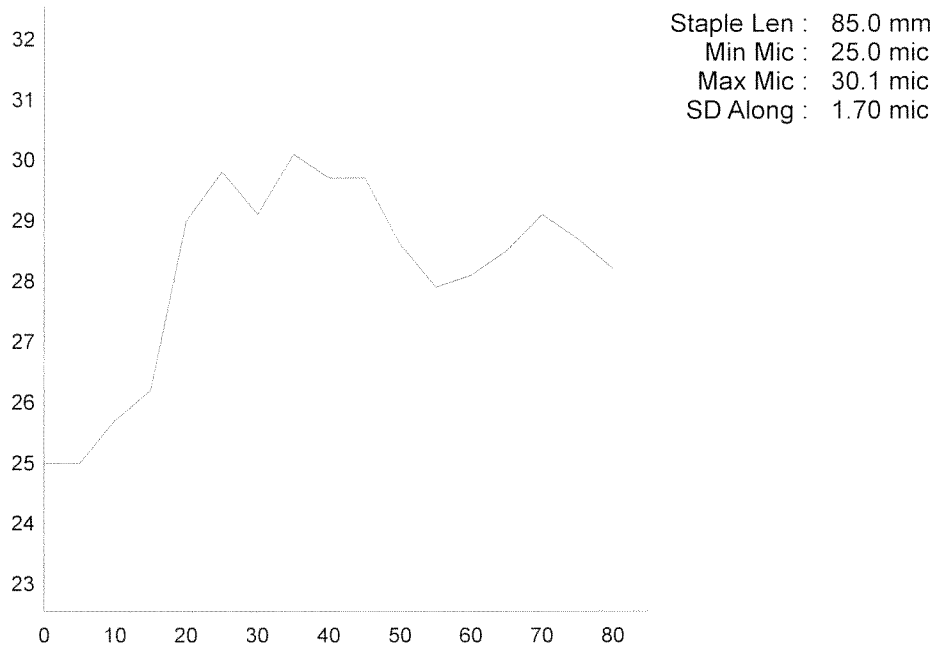
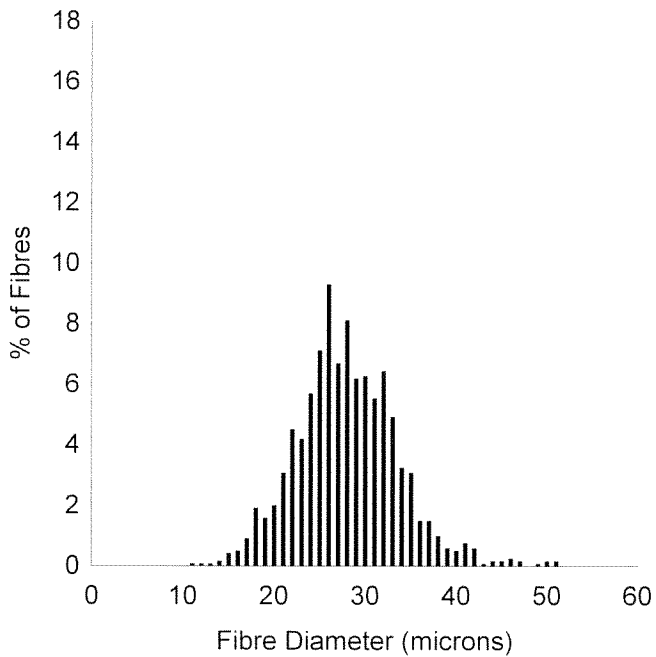
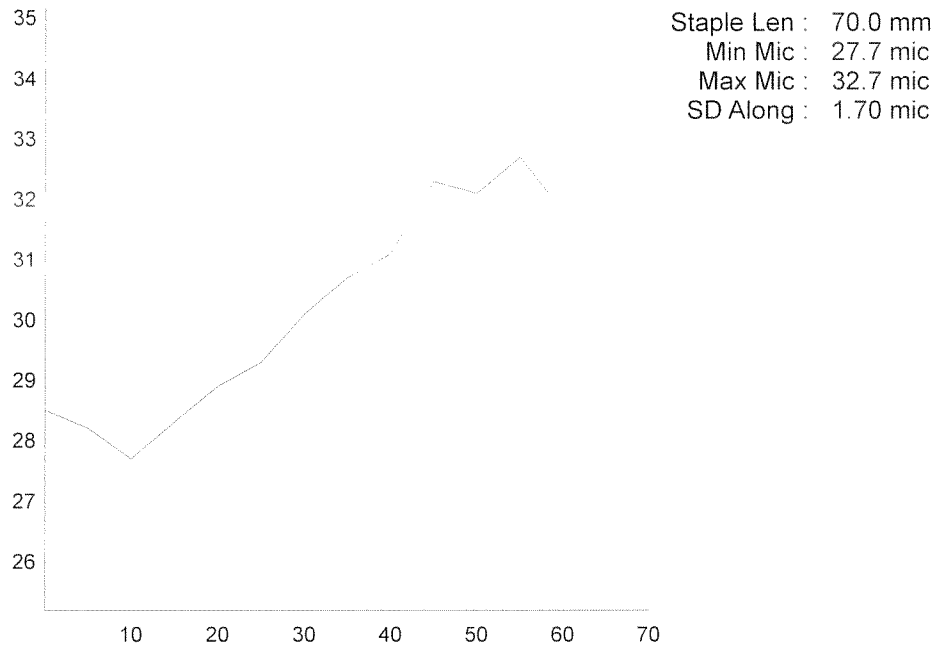
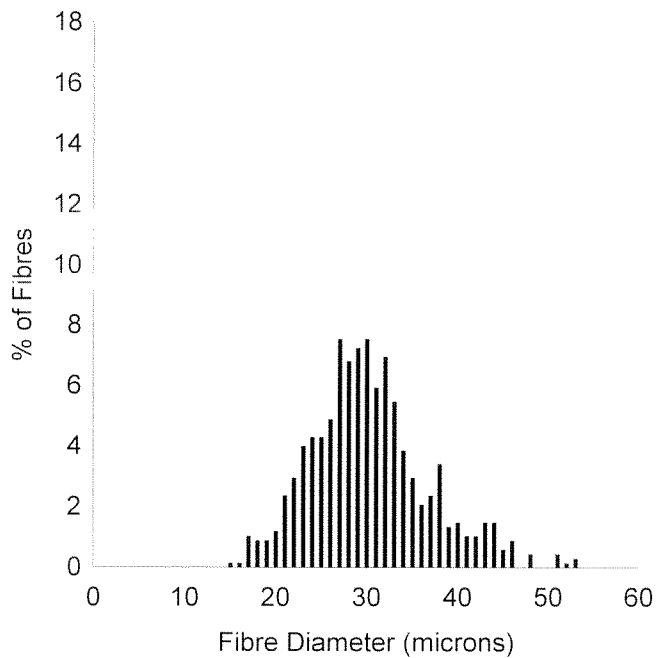
# OFDA 2000 REPORT : SORTED BY TAG

38 Wool Samples (38Records)

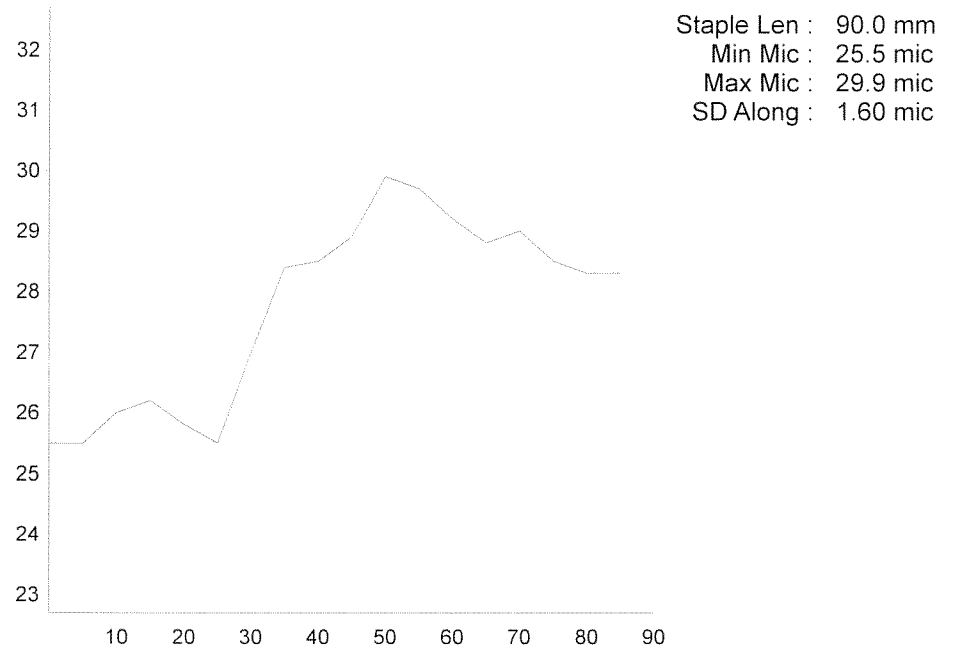
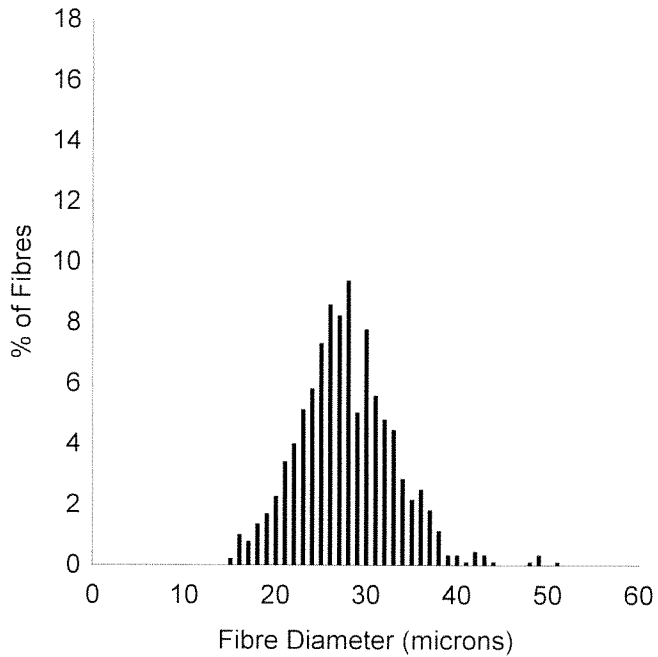
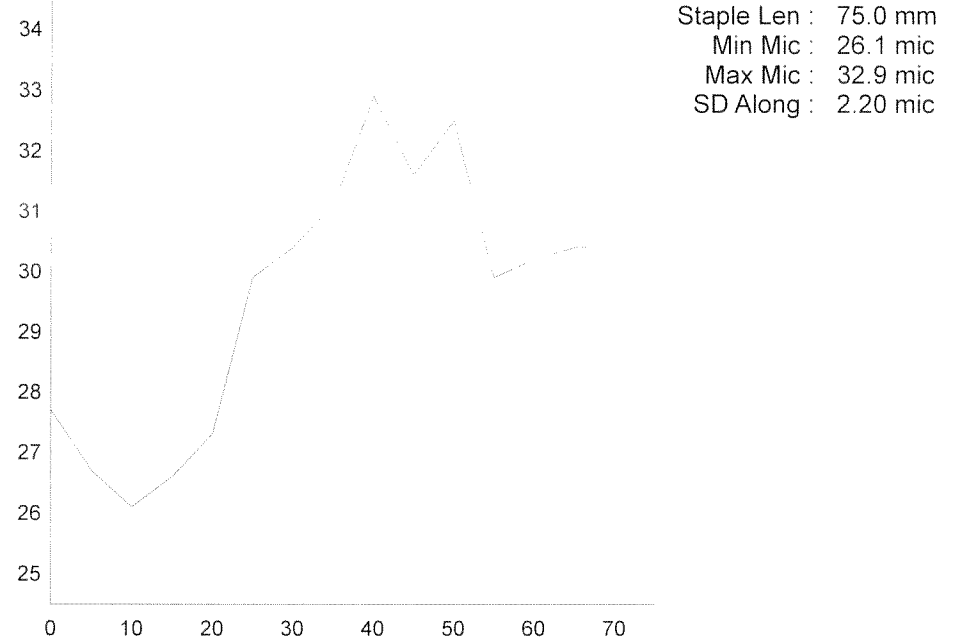
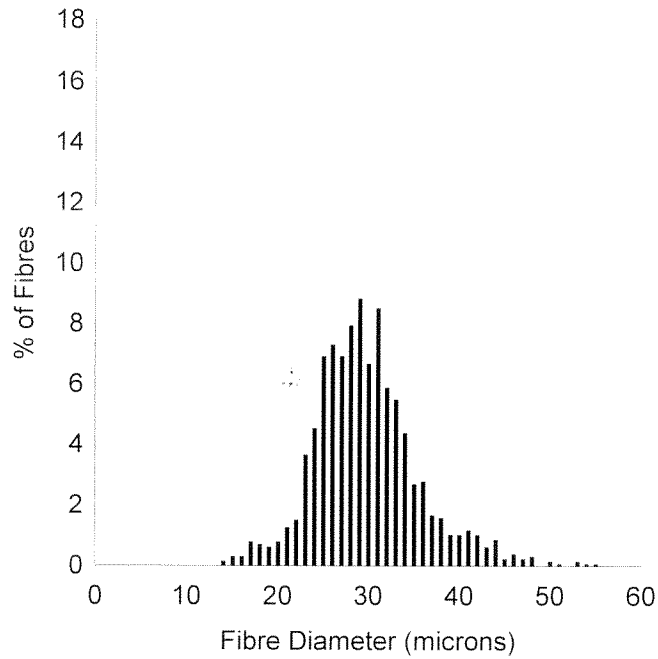


# OFDA 2000 REPORT : SORTED BY TAG

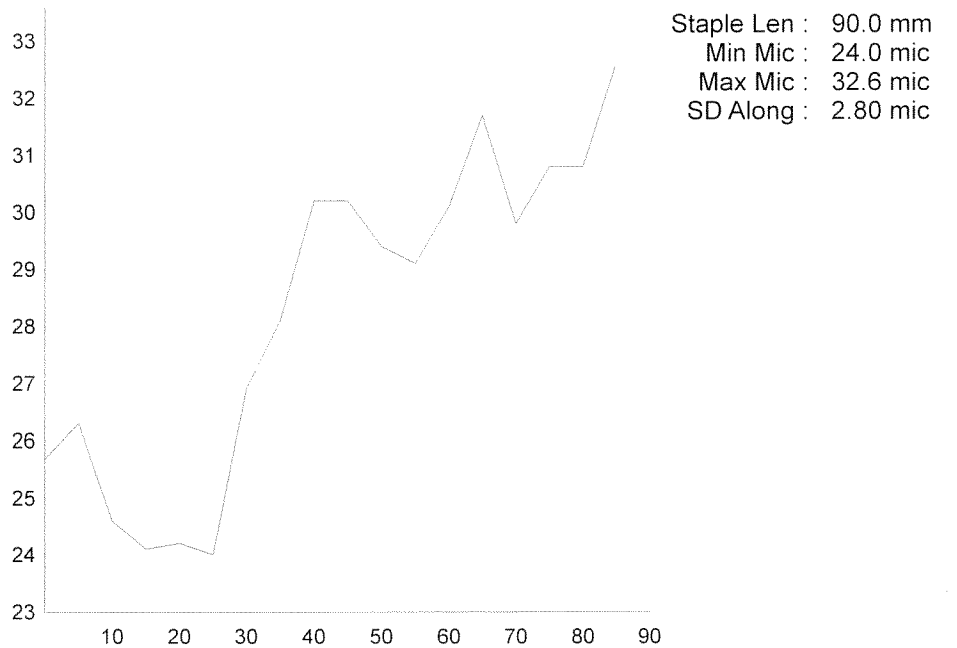
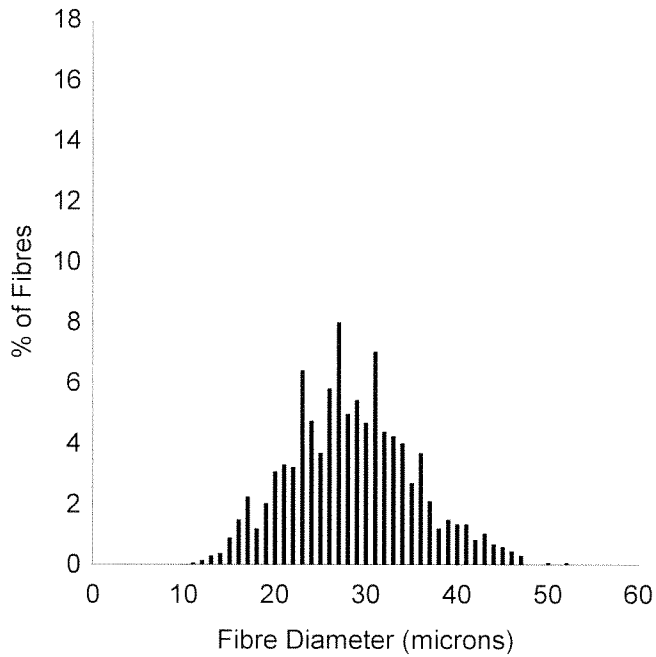
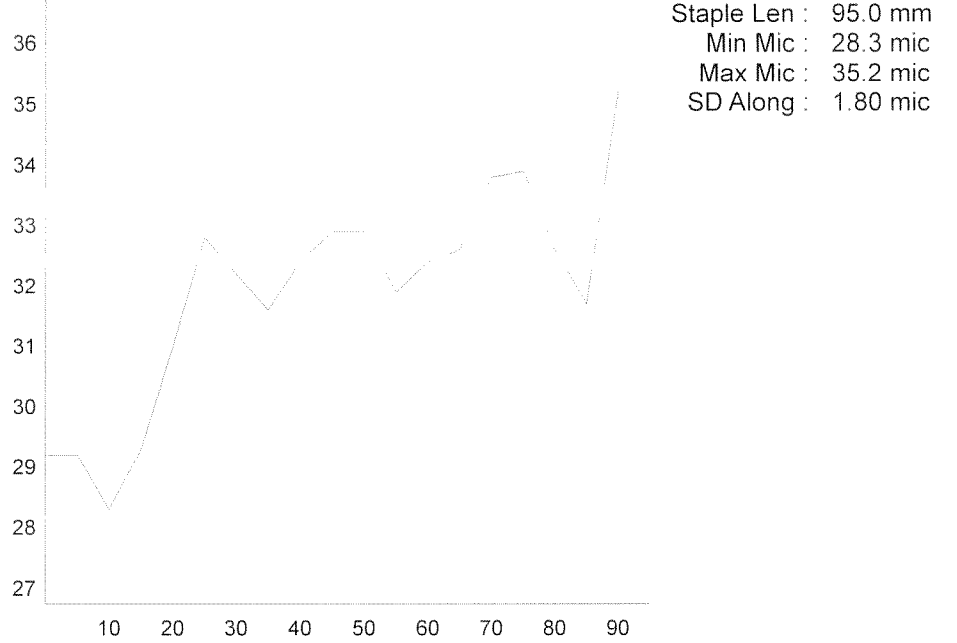
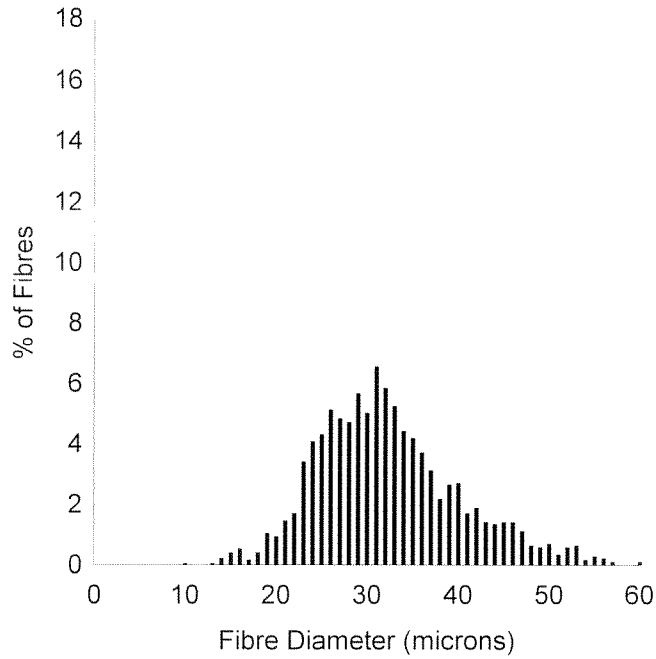
38 Wool Samples (38Records)



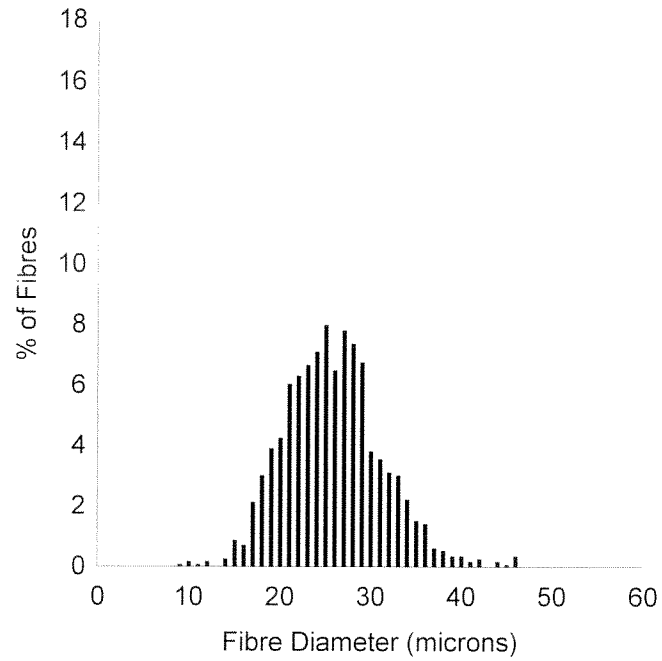
OFDA 2000 REPORT : SORTED BY TAG  
38 Wool Samples (38Records)



OFDA 2000 REPORT : SORTED BY TAG  
38 Wool Samples (38Records)

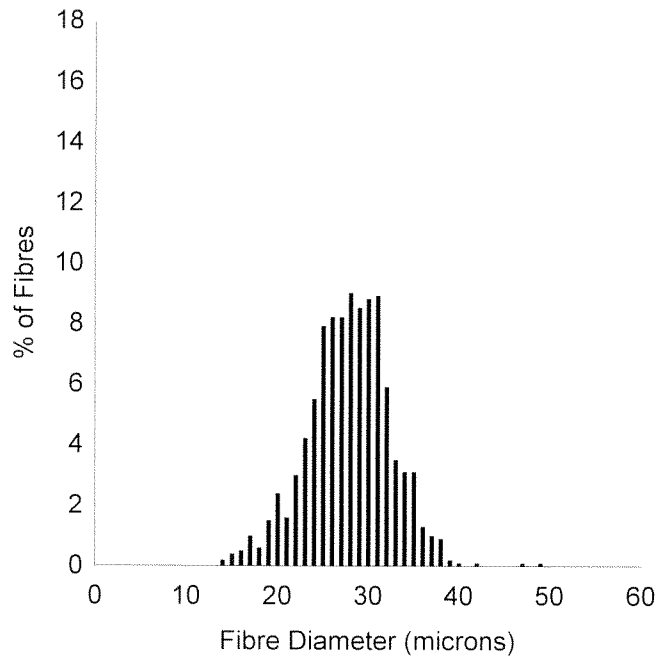
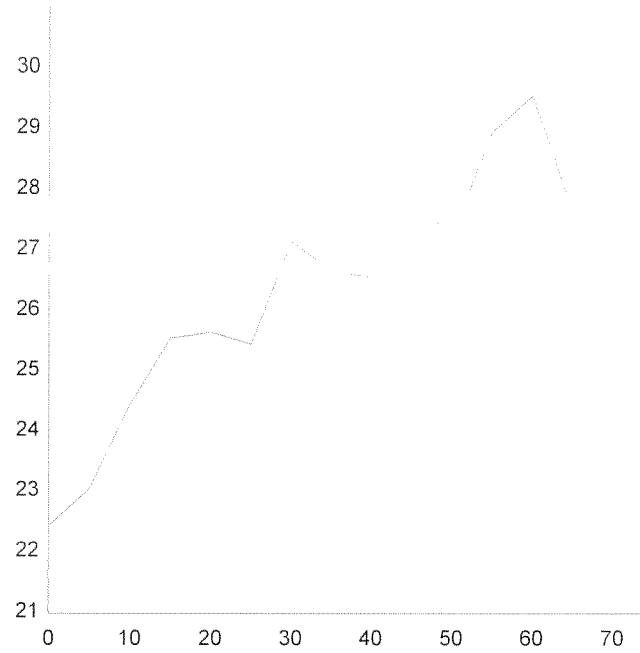


OFDA 2000 REPORT : SORTED BY TAG  
38 Wool Samples (38Records)



EarTag : Y-Sirius  
 Micron : 25.8 mic  
 SD : 5.4 mic  
 CVD : 21.0 %  
 CEM : 9.8 mic  
 <15 : 0.8 %  
 CF : 82.2 %  
 SF : 25.1 mic  
 CRV : 69.1 Dg/mm  
 SDC : 53.1 Dg/mm

Staple Len : 75.0 mm  
 Min Mic : 22.4 mic  
 Max Mic : 29.5 mic  
 SD Along : 2.00 mic



EarTag : Y-Viking  
 Micron : 27.9 mic  
 SD : 4.6 mic  
 CVD : 16.4 %  
 CEM : 7.7 mic  
 <15 : 0.2 %  
 CF : 71.6 %  
 SF : 26.2 mic  
 CRV : 63.8 Dg/mm  
 SDC : 47.2 Dg/mm

Staple Len : 75.0 mm  
 Min Mic : 22.2 mic  
 Max Mic : 30.0 mic  
 SD Along : 2.60 mic

